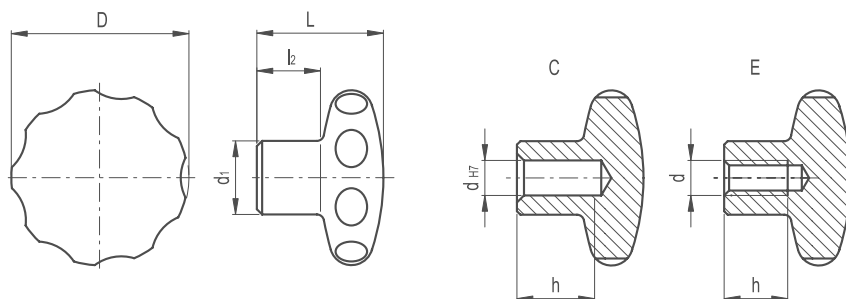


# Star Knobs Stainless Steel AISI 304



## MATERIAL

/ AISI 303 stainless steel, sandblasted matte finish

## ASSEMBLY

/ Execution C: hub, H7 reamed blind hole

/ Execution E: hub, tapped blind hole

## SPECIAL EXECUTIONS ON REQUEST

(For sufficient quantities)

/ Hub, tapped through hole

## FEATURES AND APPLICATIONS

AISI 303 stainless steel, thanks to its high resistance to corrosion, allows the application of these knobs on machines and equipment in those sectors where laws or particular hygienic, climatic and environmental factors make it mandatory to use corrosion resistant materials.



| Part Reference | D  | L    | d1 | l2 | d H7 | d   | h  |
|----------------|----|------|----|----|------|-----|----|
| SRK1SSC        | 40 | 26.5 | 18 | 15 | 8    | -   | 15 |
| SRK2SSE        | 40 | 26.5 | 18 | 15 | -    | M6  | 12 |
| SRK3SSE        | 40 | 26.5 | 18 | 15 | -    | M8  | 15 |
| SRK4SSC        | 50 | 29   | 21 | 17 | 10   | -   | 18 |
| SRK5SSE        | 50 | 29   | 21 | 17 | -    | M8  | 15 |
| SRK6SSE        | 50 | 29   | 21 | 17 | -    | M10 | 15 |
| SRK7SSC        | 60 | 33   | 25 | 18 | 12   | -   | 22 |
| SRK8SSE        | 60 | 33   | 25 | 18 | -    | M10 | 18 |
| SRK9SSE        | 60 | 33   | 25 | 18 | -    | M12 | 22 |