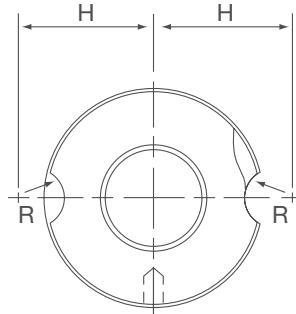
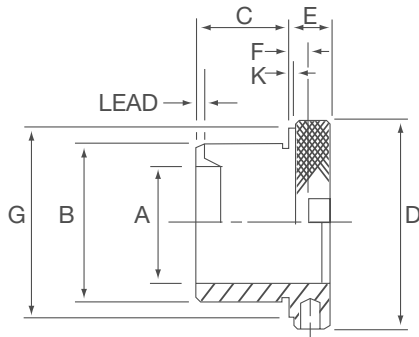


Renewable Bushes

BS 1098 PT.2 1977/ISO 4247



Key features

- / Hardened from 58 to 62 RC
- / F7 ID drill limits
- / OD ground to suit H6 limits
- / Radius for easy drill entry
- / Lead for easy drill bush location

ORDERING INSTRUCTIONS

- / Nitrided bushes for longer life can be supplied.
- / State: Qty, Type, Bore Size and Length.
- / Example - 5, RD12E 6mm.

NOTES

- See page 33 for table showing ISO Limits for Jig Bushes and standard bore sizes. *(Also Reamer Limits.)
- / Bushes with a bore size above 48mm may not be stock items.
- / Price and delivery on application.



A Dia. F7 Limits (Drills)		B Dia. m6 Limits	Length C and Bush Reference						D Dia.	G Dia. +0 - 0.25	E Length	F Thickness	K Length	H	R Rad
*Limits (Reamers) From	Up to		Short		Long		Extra Long								
			C	Ref.	C	Ref.	C	Ref.							
1.0	4	8	10	RD8D	16	RD8F	-	-	15	12	8	3	1	11.5	7
3.7	6	10	12	RD10E	20	RD10H	25	RD10J	18	15	8	3	1	13	7
5.7	8	12	12	RD12E	20	RD12H	25	RD12J	22	18	10	4	1	16	8.5
7.7	10	15	16	RD15F	28	RD15K	36	RD15N	26	22	10	4	1	18	8.5
9.6	12	18	16	RD18F	28	RD18K	36	RD18N	30	26	10	4	1	20	8.5
11.5	15	22	20	RD22H	36	RD22N	45	RD22R	34	30	12	5.5	1	23.5	10.5
14.5	18	26	20	RD26H	36	RD26N	45	RD26R	39	35	12	5.5	1	26	10.5
17.5	22	30	25	RD30J	45	RD30R	56	RD30S	46	42	12	5.5	1	29.5	10.5
21.5	26	35	25	RD35J	45	RD35R	56	RD35S	52	46	12	5.5	1.5	32.5	10.5
25.5	30	42	30	RD42L	56	RD42S	67	RD42T	59	53	12	5.5	1.5	36	10.5
29	35	48	30	RD48L	56	RD48S	67	RD48T	66	60	16	7	2	41	12.5
34	42	55	30	RD55L	56	RD55S	67	RD55T	74	68	16	7	2	45	12.5
41	48	62	35	RD62M	67	RD62T	78	RD62W	82	76	16	7	2	49	12.5
47	55	70	35	RD70M	67	RD70T	78	RD70W	90	84	16	7	2	53	12.5
53	63	78	40	RD78P	78	RD78W	105	RD78Y	100	94	16	7	2	58	12.5
61	70	85	40	RD85P	78	RD85W	105	RD85Y	110	104	16	7	2	63	12.5
68	78	95	45	RD95R	89	RD95X	112	RD95Z	120	114	16	7	2	68	12.5
76	85	105	45	RD105R	89	RD105X	112	RD105Z	130	124	16	7	2	73	12.5

All dimensions in millimetres