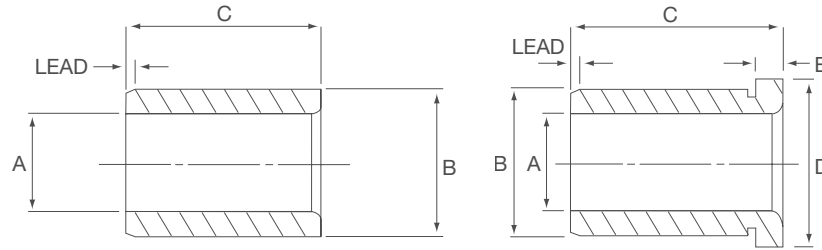


Liner Drill Bushes

BS 1098 PT.1 1967



ORDERING INSTRUCTIONS

/ State: Ref. and Length

Oversize bushes: $+0.010/+0.015$ on 'B' diameter can be supplied for finish grinding. State O/S if required after ref.



A Dia.		B Dim.	Length C and Reference											
Size	Limit		5/16"	3/8"	1/2"	3/4"	1"	1 1/4"	1 3/8"	1 1/2"	1 3/4"	2"	2 1/4"	2 1/2"
5/16	+0.002 +0.004	.5006 .5010	PL1	PL1	PL1	PL1	PL1							
1/2	+0.002 +0.006	.7507 .7512	PL2	PL2	PL2	PL2	PL2	PL2						
3/4	+0.003 +0.006	1.0009 1.0015			PL3	PL3	PL3	PL3		PL3				
1	+0.003 +0.006	1.3759 1.3765				PL4	PL4	PL4	PL4	PL4	PL4	PL4		
1 3/8	+0.004 +0.008	1.7510 1.7517				PL5	PL5	PL5	PL5	PL5	PL5	PL5	PL5	
1 3/4	+0.004 +0.008	2.2512 2.2520					PL6	PL6	PL6	PL6	PL6	PL6	PL6	PL6
2 1/4	+0.004 +0.009	2.7512 2.7520					PL7	PL7	PL7	PL7	PL7	PL7		PL7

A Dia.		B Dim.	Length C and Reference												Head	
Size	Limit		5/16"	3/8"	1/2"	3/4"	1"	1 1/4"	1 3/8"	1 1/2"	1 3/4"	2"	2 1/4"	2 1/2"	D	E
5/16	+0.002 +0.004	.5006 .5010	SL1	SL1	SL1	SL1	SL1								5/8	1/8
1/2	+0.002 +0.006	.7507 .7512	SL2	SL2	SL2	SL2	SL2								7/8	1/8
3/4	+0.003 +0.006	1.0009 1.0015			SL3	SL3	SL3	SL3		SL3					1 1/8	1/8
1	+0.003 +0.006	1.3759 1.3765				SL4	SL4	SL4	SL4	SL4	SL4	SL4			1 1/2	1/8
1 3/8	+0.004 +0.008	1.7510 1.7517				SL5	SL5	SL5	SL5	SL5	SL5	SL5	SL5		1 7/8	1/8
1 3/4	+0.004 +0.008	2.2512 2.2520					SL6	SL6	SL6	SL6	SL6	SL6	SL6	SL6	2 3/8	1/8
2 1/4	+0.004 +0.009	2.7512 2.7520					SL7	SL7	SL7	SL7	SL7	SL7		SL7	2 7/8	1/8

References shaded price on application