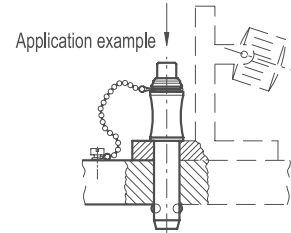
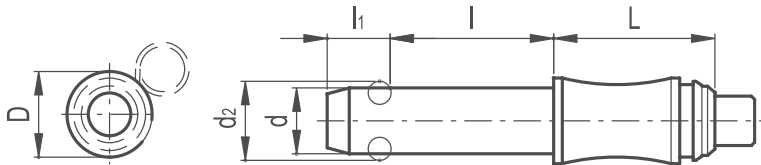


# Plain Ball Lock Pin

289

POSITIONING & MACHINE ELEMENTS



- / **Pin and push button**  
AISI 303 stainless steel.
- / **Balls and spring**  
Stainless steel.
- / **Cylindrical body**  
For a safer grip, with groove for a metal ring.
- / **Maximum working temperature**  
250°C

**SPECIAL EXECUTIONS ON REQUEST**  
(For sufficient quantities) Other dimensions.

**ACCESSORIES ON REQUEST**  
Metal ring to avoid loss or misplacement when the pin is in the rest position.

## FEATURES AND APPLICATIONS

Ball lock pins are without knob therefore they have very compact shape and dimensions for use in very limited spaces. Ball lock pins are suitable for quick fixation or connection of parts to be machined, in particular for elements which need to be removed and reset continuously.

AISI 303 stainless steel, thanks to its high resistance to corrosion, allows the application of these lock pins on machines and equipment in those sectors where laws or particular hygienic, climatic and environmental factors make it mandatory to corrosion resistant materials.

## INSTRUCTIONS OF USE

By pressing the push button the two balls are freed and the pin can be pulled-out or inserted.



Part Reference	d $\begin{smallmatrix} +0.04 \\ -0.08 \end{smallmatrix}$	d2	D	l	l1	L	Mounting Hole H11	Double sided Shearing Force (KN)
PBLP1	6	7	12	10	7	22	6	21
PBLP2	6	7	12	15	7	22	6	21
PBLP3	6	7	12	20	7	22	6	21
PBLP4	6	7	12	25	7	22	6	21
PBLP5	6	7	12	30	7	22	6	21
PBLP6	6	7	12	40	7	22	6	21
PBLP7	8	9.5	12	20	8.2	20	8	38
PBLP8	8	9.5	12	25	8.2	20	8	38
PBLP9	8	9.5	12	30	8.2	20	8	38
PBLP10	8	9.5	12	40	8.2	20	8	38
PBLP11	8	9.5	12	50	8.2	20	8	38
PBLP12	10	12	13	20	9.6	24.5	10	60
PBLP13	10	12	13	25	9.6	24.5	10	60
PBLP14	10	12	13	30	9.6	24.5	10	60
PBLP15	10	12	13	40	9.6	24.5	10	60
PBLP16	10	12	13	50	9.6	24.5	10	60
PBLP17	12	14.5	15	25	10.6	24.5	12	87
PBLP18	12	14.5	15	30	10.6	24.5	12	87
PBLP19	12	14.5	15	40	10.6	24.5	12	87
PBLP20	12	14.5	15	50	10.6	24.5	12	87
PBLP21	12	14.5	15	60	10.6	24.5	12	87