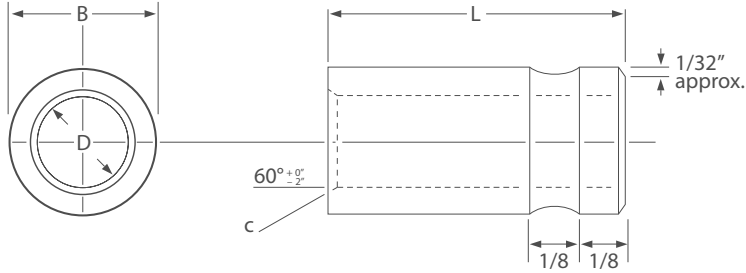


# Polygrip Recessed Serrated Bushes



**HUGE  
STOCKS**

**VOLUME  
DISCOUNT**

## MATERIAL

/ Carbon tool steel, hardened throughout.

## NOTES

Serrated bushes are common place in glass fibre, composite or synthetic jigs. The serrations and grooved recess lock the bush in place and prevent axial movement. Unlike regular drill bushes, serrated bushes are not to tight tolerance unless requested. The grooved recess feature of our GS bushes allows for resin based materials to run into the channel and set the bush in place.



Bush Reference	"Bore Diameter D"		Limits of Tolerance	Outside Diameter of Body B	Depth of Chamfer C	Length L
	From	To				
GS1	1/16	1/8	+0.0005	1/4	1/64	3/8
GS2	1.6mm	3.45mm	+0.0015	1/4	1/64	1/2
GS3				1/4	1/64	3/4
GS4				3/8	1/32	3/8
GS5	3/32	3/16	+0.0005	3/8	1/32	1/2
GS6	3.45mm	4.9mm	+0.0015	3/8	1/32	3/4
GS7	3/16	1/4	+0.001	7/16	1/32	3/8
GS8	4.95mm	6.5mm	+0.002	7/16	1/32	1/2
GS9				7/16	1/32	3/4
GS10				1/2	3/64	3/8
GS11	1/4	5/16	+0.001	1/2	3/64	1/2
GS12	6.4mm	7.9mm	+0.002	1/2	3/64	3/4
GS13				5/8	3/64	3/8
GS14	5/16	13/32	+0.001	5/8	3/64	1/2
GS15	8.0mm	10.5mm	+0.002	5/8	3/64	3/4

Unless otherwise stated, dimensions and tolerances shown in Inches.  
Maximum eccentricity 0.003.