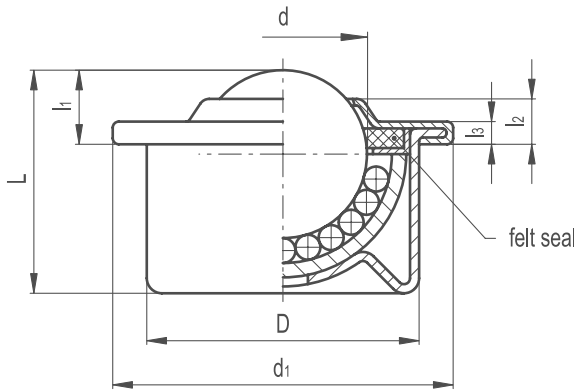


Cup Roller Units (Ball Transfer)



- / **Material**
Zinc-plated drawn sheet steel.
- / **Retaining components**
Zinc-plated steel.
- / **Balls**
Zinc-plated steel - ZP
Stainless steel - SS
- / **Retaining ring**
Felt seal (only for dimensions 22 and 30)

SPECIAL EXECUTIONS ON REQUEST
(For sufficient quantities)
/ Stainless steel body and balls.

APPLICATIONS
Ball transfer units are particularly suitable on conveyer tracks. They make linear or rotary movements easier even with heavy loads.



Part Reference	d	L +0.3	D	d1	l1 +0.3	l2 +0.3	l3	Max. Load Carrying Capacity (N)
CRU1ZP	15.8	21	24	31	9.5	5	2.5	500
CRU2SS	15.8	21	24	31	9.5	5	2.5	300
CRU3ZP	22.2	29.5	36	45	10	6	3	1200
CRU4SS	22.2	29.5	36	45	10	6	3	900
CRU5ZP	30.1	38	45	55	13.5	7	3.5	2000
CRU6SS	30.1	38	45	55	13.5	7	3.5	1500