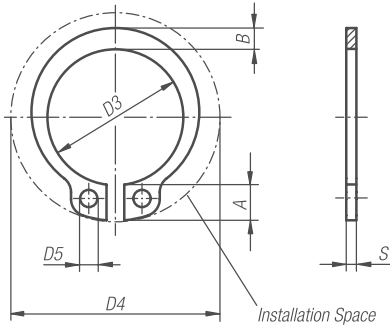
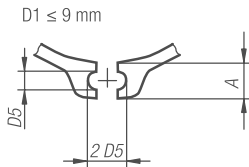
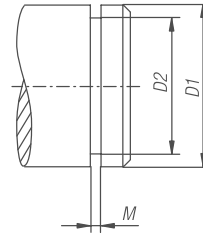


# Circlips for Shafts



Assembly Dimensions



## MATERIAL

/ Spring steel

## SURFACE FINISH

/ Phosphated

## NOTES

The circlips per DIN 471 are universally usable, axially mountable securing elements for shafts. They can transmit large axial forces between the machine element (e.g. rolling-contact bearings) and the groove in which the ring is mounted.



Part Ref.	A	B	D1	D2	D3	D4	D5	M	S	Weight (g)
CC5MM	2,5	1,1	5	4,8	4,7	10,3	1	0,7	0,6	0,066
CC6MM	2,7	1,3	6	5,7	5,6	11,7	1,2	0,8	0,7	0,084
CC8MM	3,2	1,5	8	7,6	7,4	14,7	1,2	0,9	0,8	0,158
CC10MM	3,3	1,8	10	9,6	9,3	17	1,5	1,1	1	0,340
CC12MM	3,3	1,8	12	11,5	11	19	1,7	1,1	1	0,500
CC14MM	3,5	2,1	14	13,4	12,9	21,4	1,7	1,1	1	0,640
CC15MM	3,6	2,2	15	14,3	13,8	22,6	1,7	1,1	1	0,670
CC16MM	3,7	2,2	16	15,2	14,7	23,8	1,7	1,1	1	0,700