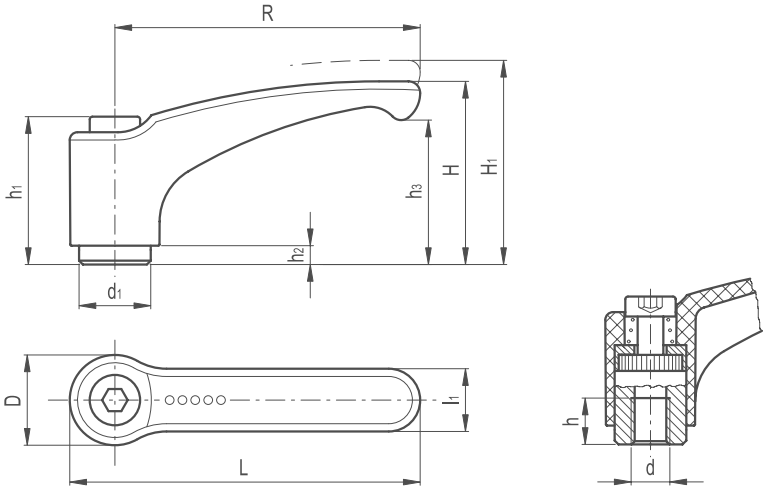


# Adjustable Clamping Lever Stainless Steel Glass Fibre Reinforced Female



**LEVER BODY**

- / Glass-fibre reinforced polyamide based (PA) technopolymer
- / Resistant to solvents, oils, greases and other chemical agents
- / Built-in zinc alloy toothed insert for coupling to the metal clamping element

**COLOUR**

- / Grey-black with matte finish

**CLAMPING ELEMENT**

AISI 303 stainless steel with threaded bore and toothed element for coupling to the built-in zinc alloy insert, AISI 303 stainless steel retaining screw and return spring.

**SPECIAL EXECUTIONS ON REQUEST**

- (For sufficient quantities)
- / Lever body in orange colour

**FEATURES AND APPLICATIONS**

Particularly suitable when the lever turning angle is limited owing to lack of space. The metal toothing of the built-in zinc alloy insert allows the assembly of clamping elements completely made out of metal, which can be easily modified by machining in case of special assembly requirements.

AISI 303 stainless steel, thanks to its high resistance to corrosion, allows the application of these adjustable handles on machines and equipment in those sectors where laws or particular hygienic, climatic and environmental factors make it mandatory to use corrosion resistant materials.

**INSTRUCTIONS OF USE**

For clamping, lift the lever to disengage the clamping device toothing and bring it back to start position. By releasing the lever, the return spring automatically engages the toothing. If the lever cannot make a 360° rotation, the clamping element can be easily screwed by means of the hexagon socket front head screw (after having disengaged the lever).

**ERGONOMY AND DESIGN**

The slightly arched shape of the lever and the ergonomic terminal enlargement give the operator a comfortable and safe grip and make the design of the handle more elegant.



Part Reference	R	L	D	H	H1	h1	h2	h3	d1	L1	Mounting Hole		Teeth No.
											d 6h	h	
ACLGFF1SS	44	52	15.5	30.5	34	24.5	3.5	22.5	10	11	M5	8	18
ACLGFF2SS	44	52	15.5	30.5	34	24.5	3.5	22.5	10	11	M6	8	18
ACLGFF3SS	63	73.5	19	38.5	42	31	3.5	30	13.5	13.5	M6	10	24
ACLGFF4SS	63	73.5	19	38.5	42	31	3.5	30	13.5	13.5	M8	10	24
ACLGFF5SS	78	90.5	23	46.5	50.5	36	3.5	36.5	16	16	M8	14	26
ACLGFF6SS	78	90.5	23	46.5	50.5	36	3.5	36.5	16	16	M10	14	26
ACLGFF7SS	95	109	26.5	56.5	61.5	43	5	45	19	18	M10	17	28
ACLGFF8SS	95	109	26.5	56.5	61.5	43	5	45	19	18	M12	17	28