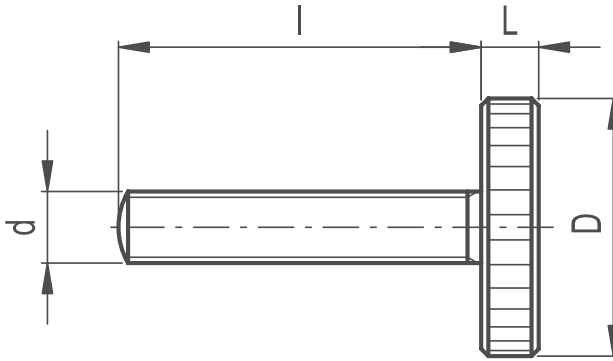


# Thumb Screw

DIN 653



## / Material

Turned black-oxide steel.

## / Assembly

Threaded pin.

## SPECIAL EXECUTIONS ON REQUEST

(For sufficient quantities) Different lengths and threads.

## / Material

AISI 303 stainless steel, sandblasted matte finish.

## / Assembly

Threaded pin.

## SPECIAL EXECUTIONS ON REQUEST

(For sufficient quantities) Different lengths and threads.

## FEATURES AND APPLICATIONS

AISI 303 stainless steel, thanks to its high resistance to corrosion, allows the application of these knobs on machines and equipment in those sectors where laws or particular hygienic, climatic and environmental factors make it mandatory to use corrosion resistant materials.



Part Reference	d	l	D	L
TS1-3702	M3	6	12	2.5
TS2-3702	M3	8	12	2.5
TS3-3702	M3	10	12	2.5
TS4-3702	M3	16	12	2.5
TS5-3702	M4	8	16	3.5
TS6-3702	M4	10	16	3.5
TS7-3702	M4	12	16	3.5
TS8-3702	M4	16	16	3.5
TS9-3702	M4	20	16	3.5
TS10-3702	M4	25	16	3.5
TS11-3702	M5	10	20	4
TS12-3702	M5	12	20	4
TS13-3702	M5	16	20	4
TS14-3702	M5	20	20	4
TS15-3702	M5	25	20	4
TS16-3702	M5	30	20	4
TS17-3702	M6	12	24	5
TS18-3702	M6	16	24	5
TS19-3702	M6	20	24	5

Part Reference	d	l	D	L
TS20-3702	M6	25	24	5
TS21-3702	M6	30	24	5
TS22-3702	M8	20	30	6
TS23-3702	M8	25	30	6
TS24-3702	M8	30	30	6
TS25-3702	M8	35	30	6
TS26-3702	M8	40	30	6
TS27-3702	M10	20	36	8
TS28-3702	M10	25	36	8
TS29-3702	M10	30	36	8
TS30-3702	M10	40	36	8

Part Reference	d	l	D	L
TS1SS	M5	10	20	4
TS2SS	M5	16	20	4
TS3SS	M6	16	24	5
TS4SS	M6	20	24	5
TS5SS	M8	20	30	6
TS6SS	M8	30	30	6