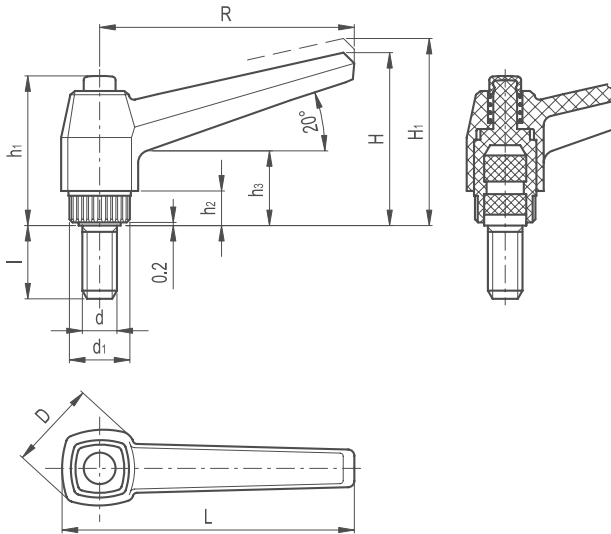


# Adjustable Clamping Lever Straight Handle Stainless Steel



231

KNOBS & HANDLES



## LEVER BODY

/ Glass-fibre reinforced polyamide based (PA) technopolymer  
/ Resistant to solvents, oils, greases and other chemical agents

## COLOUR

/ Black, matte finish

## PUSH BUTTON

/ Technopolymer, black colour, matte finish

## CLAMPING ELEMENT WITH RETAINING PIN

Glass-fibre reinforced technopolymer, black colour, with knurling on the protruding part to make initial tightening easier. AISI 302 stainless steel return spring.

## ASSEMBLY

AISI 303 stainless steel threaded stud, chamfered flat end according to UNI 947 : ISO 4753.

## SPECIAL EXECUTIONS ON REQUEST

(For sufficient quantities)

/ Lever body RAL 2004 orange, RAL 6011 green, RAL 7031 grey

## FEATURES AND APPLICATIONS

Particularly suitable when the lever turning angle is limited owing to lack of space. Compared to other types of adjustable handles with metal retaining screw this solution offers:

/ absolute electric insulation for the operator's hand  
/ more comfortable lever release.

AISI 303 stainless steel, thanks to its high resistance to corrosion, allows the application of these adjustable handles on machines and equipment working in those sectors where laws or particular hygienic, climatic and environmental factors make it mandatory to use corrosion resistant materials.

## INSTRUCTIONS OF USE

For clamping, lift the lever to disengage the clamping device tothing and bring it back to start position. By releasing the lever, the return spring automatically engages the tothing.



Continued on next page