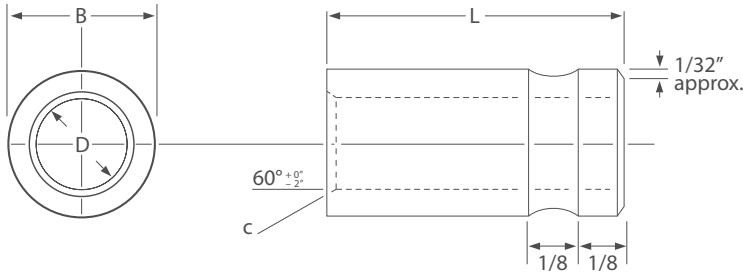


Soft Polygrip Serrated Bush

Polygrip Serrated GS Bush Soft Condition

39

BONEHAM



KEY FEATURES

- / Soft Natural Condition
- / Reworkable in the Mould

APPLICATION

Boneham Soft Serrated Bushes are designed to be reworked in a mould or fixture should alignment be slightly off-centre. They are for alignment purposes and not drilling applications. Tolerances and concentricity may differ to the standard hardened bush.

ORDERING INSTRUCTIONS

When ordering: Choose the ID required based on the pin size in use and select the part number from the corresponding length. Part numbers are formed using the 'Bush Reference' code followed by the bore size. For example: SFGS14-8.00MM

NOTES

Specials Manufactured by BONEHAM



INCH

Part Code	Bore Dia (D)	Limits	OD (B)	Depth of Chamfer (C)	Length (L)
SFGS7-1/4"	1/4"	+0.001 / +0.002	7/16"	1/32"	3/8"
SFGS8-1/4"	1/4"	+0.001 / +0.002	7/16"	1/32"	1/2"
SFGS9-1/4"	1/4"	+0.001 / +0.002	7/16"	1/32"	3/4"
SFGS13-5/16"	5/16"	+0.001 / +0.002	5/8"	5/8"	3/8"
SFGS14-5/16"	5/16"	+0.001 / +0.002	5/8"	5/8"	1/2"
SFGS15-5/16"	5/16"	+0.001 / +0.002	5/8"	5/8"	3/4"

METRIC

Part Code	Bore Dia (D)	Limits	OD (B)	Depth of Chamfer (C)	Length (L)
SFGS7-6.00MM	6mm	+0.001 / +0.002	7/16"	1/32"	3/8"
SFGS8-6.00MM	6mm	+0.001 / +0.002	7/16"	1/32"	1/2"
SFGS9-6.00MM	6mm	+0.001 / +0.002	7/16"	1/32"	3/4"
SFGS13-8.00MM	8mm	+0.001 / +0.002	5/8"	5/8"	3/8"
SFGS14-8.00MM	8mm	+0.001 / +0.002	5/8"	5/8"	1/2"
SFGS15-8.00MM	8mm	+0.001 / +0.002	5/8"	5/8"	3/4"