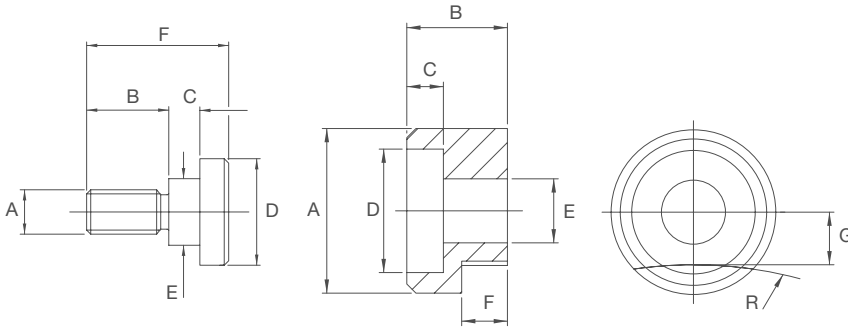
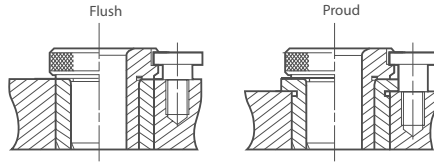


# Lock Screw

BS 1098 PT.2 1977/ISO 4247



## WHEN BUSH HEAD IS FLUSH

For use with Bushes	F	C	B	D	E	A	Screw Ref.
RD8 - RD10	15	3	9	13	7.5	M5	MS5
RD12 - RD18	18	4	10	16	9.5	M6	MS6
RD22 - RD42	22	5.5	11.5	20	12.0	M8	MS8
RD4S - RD105	32	7	18.5	24	15.0	M10	MS10

## WHEN BUSH HEAD IS PROUD

For use with Bushes	F	C	B	D	E	A	Screw Ref.
RD8 - RD10	18	6	9	13	7.5	M5	LMS5
RD12 - RD18	22	8	10	16	9.5	M6	LMS6
RD22 - RD42	27	10.5	11.5	20	12.0	M8	LMS8
RD48 - RD105	38	13	18.5	24	15.0	M10	LMS10

All dimensions in millimetres

## TENONS

### WHEN BUSH HEAD IS FLUSH

For use with Bushes	B	F	C	A	D	E	R	G	Size of Fixing Screw	Tenon Ref.
RD8 - RD10	8	3	4	13	10	5.1	9.5	3.7	M5	DMS5
RD12 - RD18	10	4	5	16	12	6.1	15	4.7	M6	DMS6
RD22 - RD42	12	5.5	5	20	15	8.1	30	6.2	M8	DMS8
RD48 - RD105	16	7	7	24	18	10.1	80	7.5	M10	DMS10

### WHEN BUSH HEAD IS PROUD

For use with Bushes	B	F	C	A	D	E	R	G	Size of Fixing Screw	Tenon Ref.
RD8 - RD10	11	6	4	13	10	5.1	9.5	3.7	M5	DLMS5
RD12 - RD18	14	8	5	16	12	6.1	15	4.7	M6	DLMS6
RD22 - RD42	17	10.5	5	20	15	8.1	30	6.2	M8	DLMS8
RD48 - RD105	22	13	7	24	18	10.1	80	7.5	M10	DLMS10

All dimensions in millimetres