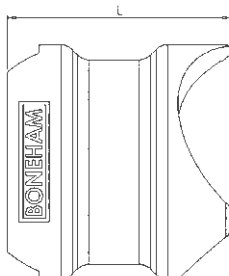
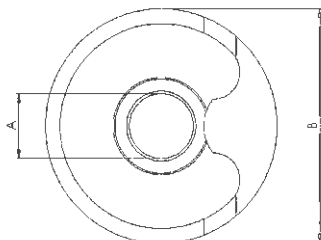


Egg Cup Bush

Right Angle Drill Bush Fixture



KEY FEATURES

- / Ideal for drilling sheet metal
- / Red Anodised Aluminium
- / For Standard Renewable Bushes
- / Etched Part Code
- / Etched Size Range
- / Incorporated lockscrew
- / Complete with liner bush
- / Cut away profile
- / Radiused tripod design
- / Rounded feet

APPLICATION

Boneham "Egg Cup" style drill bush fixtures are designed to provide an accurate and portable drilling fixture. This drilling solution is ideal for sheet metal applications including piloting, drilling and reaming for rivets. Interchangeable with traditional Boneham drill bushes and lock screws. No need for a separate range of drill bushes or liners.

ORDERING INSTRUCTIONS

When ordering identify the OD size required based on the standard drill range.

For example:

- / 1/4" drilled hole: RPS2 1/4" x 1/2" bush required and an Egg Cup part of ECB-500LS

NOTES

- / Nylon version available
- / Specials Manufactured by BONEHAM
- / Egg cups have been designed to work with 12mm and 1/2" long bushes



Part Code	Fixture ID (A)	To Suit Renewable Bush	Bush ID Range	Diameter (B)	Height (L)
ECB-12LS	12mm	RD12 / SFM-12	3mm - 9.525mm	43.5mm	42mm
ECB-500LS	1/2"	RPS2 / SF32	1/8" - 3/8"	43.5mm	42mm