

KOENIG EXPANDER® SEALING PLUGS

Series SK 550 / SKC 550

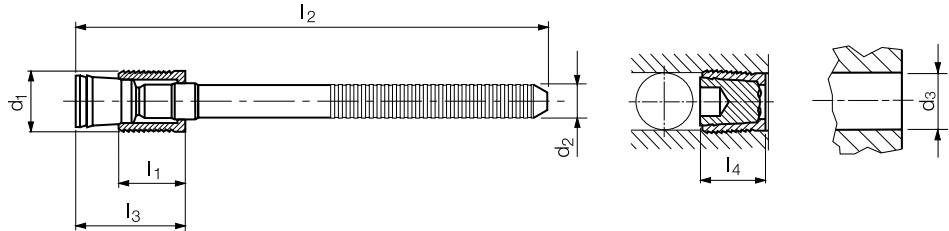


Material:

Sleeve: Case Hardening Steel, Gun Metal-Finish
Mandrel: Steel, Special Oil Film Lubrication

Important:

See installation instructions on page 80
Installation requirements on page 73



Part Number	d ₁	l ₁	d ₂	l ₂	l ₃ max.	l ₄ max.	d ₃ +0.12 0	Packaging Unit*	Weight in gram/pcs.
SKC550-040	4.0	4.5	2.50	39	8.1	6.5	4.0	1000	1.71
SKC550-050	5.0	5.5	2.80	41	9.5	7.5	5.0	1000	2.50
SKC550-060	6.0	6.5	3.30	38	11.5	8.5	6.0	500	3.50
SKC550-070	7.0	7.5	4.00	38	13.0	9.5	7.0	500	5.10
SK550-080	8.0	8.5	4.20	40	14.5	10.5	8.0	500	6.33
SK550-090	9.0	9.5	4.50	43	16.7	11.5	9.0	250	8.23
SK550-100	10.0	10.5	4.80	43	18.7	13.5	10.0	250	10.57

Dimensions in millimeters

*Standard pack quantities may vary by sales organization

PRESSURE PERFORMANCE

Series SK / SKC 550 mm	①	②	③	⑤	⑥	⑦	⑧
	ETG-100 / 44SMn28 AISI 1144	C15Pb / 1.0403 ~ SAE 1015 (10L15)	EN 1563: GJS-600-3 ASTM A536: 80-60-03	EN 1561: GJL-250 ASTM A48: NO.35	AlCu4Mg1 / EN AW-2024-T3 AA: 2024 T4/T6*	AlMgSiPb / EN AW-6012-T6 AA: 6012-T6	G-AlSi7Mg / EN-AC-42100 ASTM/UNS: A356
Base Material of the Installation							
Ø 4 – 10	1600 bar / 23200 psi 500 bar / 7200 psi					1400 bar / 20300 psi 450 bar / 6500 psi	

Proof Pressure Test - ⑧

Max. Allowable Working Pressure = Nominal Pressure

*SFC KOENIG's North American Engineering Department utilizes 2024-T4/T6 as a test base material.