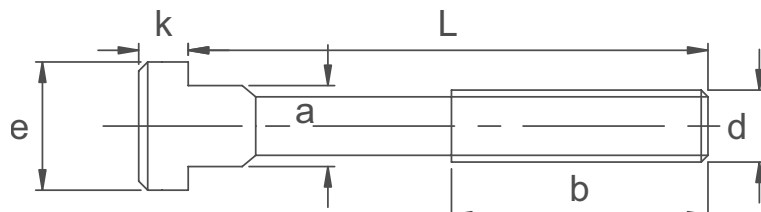


# T-Slot Bolts

DIN 787



159

CLAMPING & FIXING

## MATERIAL

/ Forged steel with milled T.

## FEATURES

- / Slot guide faces
- / Rolled thread. M6 - M12 strength class 10.9.
- / M14 - M30 class 8.8.



Part Ref.	d x * x L	b	a	e	k
TB-4004	M6 x 6 x 25	15	5.7	10	4
TB-4012	M6 x 6 x 40	28	5.7	10	4
TB-4020	M6 x 6 x 63	40	5.7	10	4
TB-4038	M8 x 8 x 32	22	7.7	13	6
TB-0374	M8 x 8 x 50	35	7.7	13	6
TB-0382	M8 x 8 x 80	50	7.7	13	6
TB-4046	M10 x 10 x 40	30	9.7	15	6
TB-0390	M10 x 10 x 63	45	9.7	15	6
TB-0408	M10 x 10 x 100	60	9.7	15	6
TB-0416	M12 x 12 x 50	35	11.7	18	7
TB-5605	M12 x 12 x 63	40	11.7	18	7
TB-0424	M12 x 12 x 80	55	11.7	18	7
TB-0432	M12 x 12 x 125	75	11.7	18	7
TB-0440	M12 x 12 x 200	120	11.7	18	7
TB-0457	M12 x 14 x 50	35	13.7	22	8
TB-5613	M12 x 14 x 63	45	13.7	22	8
TB-0465	M12 x 14 x 80	55	13.7	22	8
TB-0473	M12 x 14 x 125	75	13.7	22	8
TB-0481	M12 x 14 x 200	120	13.7	22	8
TB-0499	M14 x 16 x 63	45	15.7	25	9
TB-0507	M14 x 16 x 100	65	15.7	25	9
TB-0515	M14 x 16 x 160	100	15.7	25	9
TB-0523	M14 x 16 x 250	150	15.7	25	9
TB-0531	M16 x 16 x 63	45	15.7	25	9
TB-5621	M16 x 16 x 80	55	15.7	25	9
TB-0549	M16 x 16 x 100	65	15.7	25	9
TB-0556	M16 x 16 x 160	100	15.7	25	9
TB-5647	M16 x 16 x 200	125	15.7	25	9
TB-0564	M16 x 16 x 250	150	15.7	25	9
TB-0572	M16 x 18 x 63	45	17.8	28	10
TB-5639	M16 x 18 x 80	55	17.7	28	10
TB-0580	M16 x 18 x 100	65	17.7	28	10
TB-0598	M16 x 18 x 160	100	17.7	28	10
TB-5654	M16 x 18 x 200	125	17.7	28	10
TB-0606	M16 x 18 x 250	150	17.7	28	10

\* Slot width

Part Ref.	d x * x L	b	a	e	k
TB-4103	M20 x 20 x 80	55	19.7	32	12
TB-4053	M20 x 20 x 100	65	19.7	32	12
TB-4111	M20 x 20 x 125	85	19.7	32	12
TB-5662	M20 x 20 x 160	110	19.7	32	12
TB-4129	M20 x 20 x 200	125	19.7	32	12
TB-4079	M20 x 20 x 250	150	19.7	32	12
TB-4137	M20 x 20 x 315	190	19.7	32	12
TB-0614	M20 x 22 x 80	55	21.7	35	14
TB-5829	M20 x 22 x 100	65	21.7	35	14
TB-0622	M20 x 22 x 125	85	21.7	35	14
TB-5670	M20 x 22 x 160	110	21.7	35	14
TB-0630	M20 x 22 x 200	125	21.7	35	14
TB-5845	M20 x 22 x 250	150	21.7	35	14
TB-0648	M20 x 22 x 315	190	21.7	35	14
TB-0770	M24 x 24 x 100	70	23.7	40	16
TB-5688	M24 x 24 x 125	85	23.7	40	16
TB-0788	M24 x 24 x 160	110	23.7	40	16
TB-5704	M24 x 24 x 200	125	23.7	40	16
TB-0796	M24 x 24 x 250	150	23.7	40	16
TB-4061	M24 x 24 x 315	190	23.7	40	16
TB-0804	M24 x 24 x 400	240	23.7	40	16
TB-0655	M24 x 28 x 100	70	27.7	44	18
TB-5696	M24 x 28 x 125	85	27.7	44	18
TB-0663	M24 x 28 x 160	110	27.7	44	18
TB-5712	M24 x 28 x 200	125	27.7	44	18
TB-0671	M24 x 28 x 250	150	27.7	44	18
TB-4087	M24 x 28 x 315	190	27.7	44	18
TB-0689	M30 x 28 x 400	240	27.7	44	18
TB-0697	M30 x 36 x 125	80	35.6	54	22
TB-5720	M30 x 36 x 160	110	35.6	54	22
TB-0705	M30 x 36 x 200	135	35.6	54	22
TB-5738	M30 x 36 x 250	150	35.6	54	22
TB-0713	M30 x 36 x 315	200	35.6	54	22
TB-0721	M30 x 36 x 500	300	35.6	54	22