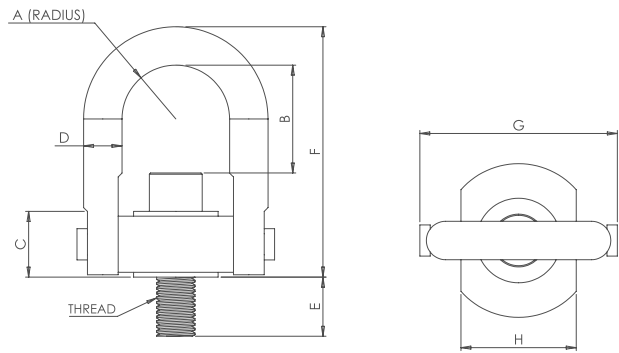


# Metric Stainless Steel Safety Hoist Ring



### KEY FEATURES

- / 200% Proof-Load Tested with Serial Number for Traceability
- / Swivels 360° - Pivots 180°
- / Material: 316 Stainless Steel
- / Safety Factor: 5:1
- / Liquid Penetrant
- / Rated at 100% from 0°-90°
- / Fatigue Tested to 20,000 Cycles at 1-1/2x the rated load
- / Meets or exceeds the requirements of ASME B30.26
- / Thread: Longer Thread Projection and Fine Threads available
- / Conforms to CE



Rated Loads (KGS)	Thread Size	A	C	D	E	Standard U-Bar			Long U-Bar			G	H	Torque (N-M)	WT. (LBS)
						Part No.	B	F	Part No.	B	F				
200	M8x1.25	11	18	10	13	SSHRM58912	32	68				47	25	4	0.4
250	M10x1.50	11	18	10	18	SSHRM58916	30	68				47	25	8	0.4
525	M12x1.75	22	30	19	19	SSHRM58924	60	121	SSHRM59124	110	171	89	51	18	2.5
950	M16x2.00	22	30	19	29	SSHRM58930	56	121	SSHRM59130	106	171	89	51	40	2.5
1,075	M20x2.50	22	30	19	34	SSHRM58936	52	121	SSHRM59136	102	171	89	51	68	2.5
1,500	M20x2.50	36	43	25	32	SSHRM58942	78	166	SSHRM59142	118	206	131	76	68	7.0
2,100	M24x3.00	36	43	25	37	SSHRM58948	74	166	SSHRM59148	114	206	131	76	108	7.0
2,100	M30x3.50	36	43	25	58				SSHRM58950	108	206	131	76	108	7.0
3,500	M30x3.50	45	54	32	42	SSHRM58956	106	222				165	95	318	15.0
3,500	M30x3.50	45	54	32	62	SSHRM58958	106	222				165	95	318	15.0
5,500	M36x4.00	57	71	44	64	SSHRM58966	166	317				217	124	542	35.0
6,250	M42x4.50	57	71	44	82	SSHRM58968	160	317				217	124	542	36.0
6,750	M48x5.00	57	71	44	82	SSHRM58970	154	317				217	124	542	38.0
11,150	M64x6.00	76	103	57	101	SSHRM58972	204	428				296	165	1423	86.0
15,750	M72x6.00	95	133	70	132	SSHRM58988	220	495				359	206	2915	165.0
22,300	M90x6.00	102	153	83	177	SSHRM58990	235	561				404	218	3459	260.0