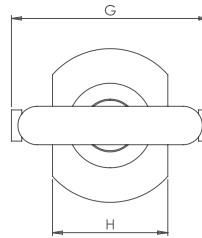
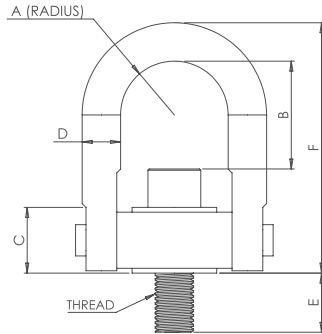


# Stainless Steel Safety Hoist Ring


**VOLUME  
DISCOUNT**
**STAINLESS  
STEEL**

## KEY FEATURES

- / 200% Proof-Load Tested with Serial Number for Traceability
- / Swivels 360° - Pivots 180°
- / Material: 316 Stainless Steel
- / Safety Factor: 5:1
- / Liquid Penetrant

- / Rated at 100% from 0°-90°
- / Fatigue Tested to 20,000 Cycles at 1-1/2x the rated load
- / Meets or exceeds the requirements of ASME B30.26
- / Thread: Longer Thread Projection and Fine Threads available
- / Conforms to CE



Rated Loads (LBS)	Thread Size	A	C	D	E	Standard U-Bar			Long U-Bar			G	H	Torque (FT- LBS)	WT. (LBS)
						Part No.	B	F	Part No.	B	F				
300	1/4-20	0.43	0.71	3/8	0.54	SSHR58100	1.27	2.67				1.84	1.00	3	0.3
400	5/16-18	0.43	0.71	3/8	0.29	SSHR58102	1.27	2.57				1.84	1.00	3.5	0.3
400	5/16-18	0.43	0.71	3/8	0.54	SSHR58104	1.27	2.67				1.84	1.00	3.5	0.3
500	3/8-16	0.43	0.71	3/8	0.54	SSHR58106	1.27	2.67				1.84	1.00	6	0.3
1,250	1/2-13	0.70	0.93	1/2	1.07	SSHR58602	1.84	3.77				2.58	1.49	14	1.0
1,250	1/2-13	0.88	1.22	3/4	0.78	SSHR58008	2.31	4.78	SSHR58644	4.25	6.72	3.52	1.99	14	2.6
1,250	1/2-13	0.88	1.22	3/4	1.03	SSHR58010	2.31	4.78	SSHR58646	4.25	6.72	3.52	1.99	14	2.6
1,250	1/2-13	0.88	1.22	3/4	1.28	SSHR58012	2.31	4.78	SSHR58648	4.25	6.72	3.52	1.99	14	2.6
2,000	5/8-11	0.88	1.22	3/4	0.78	SSHR58002	2.18	4.78	SSHR58641	4.12	6.72	3.52	1.99	30	2.6
2,000	5/8-11	0.88	1.22	3/4	1.03	SSHR58004	2.18	4.78	SSHR58640	4.12	6.72	3.52	1.99	30	2.6
2,000	5/8-11	0.88	1.22	3/4	1.28	SSHR58006	2.18	4.78	SSHR58642	4.12	6.72	3.52	1.99	30	2.6
2,500	3/4-10	0.88	1.22	3/4	1.03	SSHR58014	2.06	4.78	SSHR58650	4.00	6.72	3.52	1.99	50	3.0
2,500	3/4-10	0.88	1.22	3/4	1.53	SSHR58018	2.06	4.78	SSHR58654	4.00	6.72	3.52	1.99	50	3.0
3,500	3/4-10	1.40	1.71	1	1.04	SSHR58204	3.06	6.52	SSHR58658	4.65	8.11	5.14	3.00	50	7.0
3,500	3/4-10	1.40	1.71	1	1.54	SSHR58206	3.06	6.52	SSHR58660	4.65	8.11	5.14	3.00	50	7.0
4,000	7/8-9	1.40	1.71	1	1.04	SSHR58202	2.93	6.52	SSHR58656	4.52	8.11	5.14	3.00	80	7.0
4,000	7/8-9	1.40	1.71	1	1.29	SSHR58203	2.93	6.52	SSHR58652	4.52	8.11	5.14	3.00	80	7.0
5,000	1-8	1.40	1.71	1	1.29	SSHR58210	2.81	6.52	SSHR58662	4.40	8.11	5.14	3.00	115	7.5
5,000	1-8	1.40	1.71	1	1.54	SSHR58212	2.81	6.52	SSHR58664	4.40	8.11	5.14	3.00	115	7.5
5,000	1-8	1.40	1.71	1	2.29	SSHR58214	2.81	6.52	SSHR58666	4.40	8.11	5.14	3.00	115	7.5
7,500	1 1/4-7	1.75	2.11	1-1/4	1.89	SSHR58802	4.12	8.73				6.50	3.76	235	14.0
12,000	1 1/2-6	2.25	2.81	1-3/4	2.70	SSHR58404	6.41	12.47				8.55	4.87	400	34.0
15,000	2-4 1/2	2.25	2.81	1-3/4	2.96	SSHR58400	5.91	12.47				8.55	4.87	400	36.0
25,000	2 1/2-8	3.00	4.09	2-1/4	4.00	SSHR59002	8.03	16.87				11.67	6.52	1050	88.0
25,000	2 1/2-4	3.00	4.09	2-1/4	4.00	SSHR59006	8.03	16.87				11.67	6.52	1050	88.0
37,500	3-4	3.75	5.27	2-3/4	5.00	SSHR59200	8.48	19.50				14.15	8.10	2150	166.0
50,000	3 1/2-4	4.00	6.06	3-1/4	7.00	SSHR59402	9.28	22.09				15.90	8.60	2550	265.0