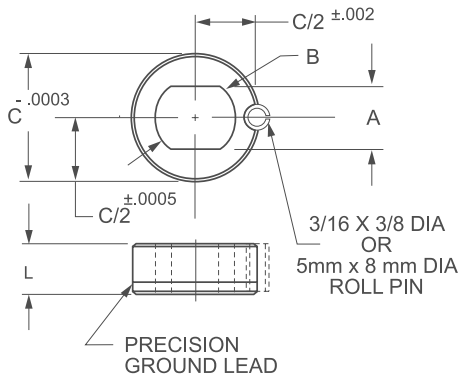


# Slotted Locator Bushes

## SL Type Press-Fit Locator Bush



### KEY FEATURES

- / INCH (SL) and Metric (SLM)
- / Heat treated to HRC 58-62
- / Precision ground
- / Black oxide finish

### APPLICATION

Boneham's 'SL Type' Slotted Locator Bushes are designed for use with 'L' or 'T' Pins. Using a configuration with a high tolerance bush, Slotted Location Bushes allow for relief in one direction during alignment, whilst maintaining tight tolerances in the other direction.

### ORDERING INSTRUCTIONS

When ordering identify the slot width required and select the appropriate part number. Example: SL-488-A

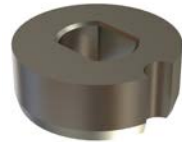
### NOTES

#### To Install:

- / Drill and ream a 3/16 for the Inch roll pin or 5mm for the metric assembly
- / Then bore a press fit hole with an interference fit of 0.0003 to 0.0005
- / Press the roll pin and locator bush in together until flush. The relationship between the roll pin and bush provides accurate orientation.

#### Roll Pin Included:

Inch: 3/16 x 3/8  
Metric: 5mm x 8mm



- / Stainless can be manufactured upon request. Please talk to the technical sales team.

## INCH

Part No.	A	B	C	L	Pin Dia.
SL-488-A	.1876 / .1882	0.312	0.7504	0.40	3/16
SL-488-B	.2501 / .2507	0.375	0.7504	0.40	1/4
SL-648-A	.2501 / .2507	0.375	1.0004	0.40	1/4
SL-648-B	.3126 / .3132	0.437	1.0004	0.40	5/16
SL-648-C	.3751 / .3757	0.500	1.0004	0.40	3/8
SL-648-D	.5001 / .5007	0.625	1.0004	0.40	1/2
SL-6416	.5001 / .5007	0.625	1.0004	0.90	1/2
SL-8016	.6251 / .6257	0.750	1.2504	0.90	5/8
SL-9616-A	.7501 / .7510	0.812	1.5004	1.00	3/4
SL-9616-B	.8751 / .8760	1.000	1.5004	1.00	7/8
SL-9616-C	1.0001 / 1.0010	1.062	1.5004	1.00	1

## METRIC

Part No.	A	B	C	L	Pin Dia.
SLM6	6.00 / 6.03mm .2363 / .2373	9mm 0.354	20mm 0.787	9mm 0.354	6mm
SLM8	8.00 / 8.03mm .3151 / .3161	11mm 0.423	24mm 0.945	9mm 0.354	8mm
SLM10	10.00 / 10.30mm .3938 / .3948	13mm 0.512	24mm 0.945	9mm 0.354	10mm
SLM12	12.00 / 12.03mm .4725 / .4735	15mm 0.591	24mm 0.945	14mm 0.551	12mm
SLM16	16.00 / 16.03mm .6300 / .6310	18mm 0.709	30mm 1.181	12mm 0.472	16mm
SLM20	20.00 / 20.03mm .7875 / .7885	22mm 0.866	36mm 1.417	19mm 0.748	20mm
SLM25	25.00 / 25.03mm .9844 / .9854	27mm 1.063	40mm 1.575	19mm 0.748	25mm

