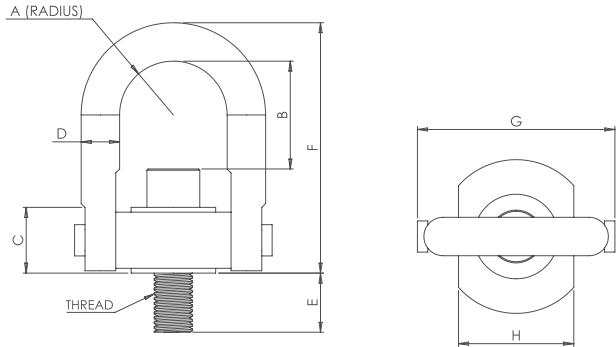


# Metric Safety Swivel Hoist Ring



KEY FEATURES

- / 200% Proof-Load Tested with Serial Number for Traceability
  - / Swivels 360° - Pivots 180°
  - / Material: Alloy Steel
  - / Finish: Black Oxide (Also available: Cadmium Plated, Electroless Nickel Plated, Zinc Plated)
  - / Safety Factor: 5:1
- / Magnetic Particle Inspected
  - / Certified Heat Treatment
  - / Rated at 100% from 0°-90°
  - / Fatigue Tested to 20,000 Cycles at 1-1/2x the Rated Load
  - / Meets or Exceeds the Requirements of ASME B30.26
  - / Thread: Longer Thread Projection and Fine Threads Available
  - / Comforms to CE



Rated Loads (KGS)	Thread Size	A	C	D	E	Standard U-Bar			Long U-Bar			G	H	Torque (N-M)	WT. (LBS)
						Part No.	B	F	Part No.	B	F				
400	M8x1.25	11	18	10	13	SHRM46912	32	68				47	25	9	0.4
400	M8x1.25	11	18	10	18	SHRM46913	32	68				47	25	9	0.4
500	M10x1.50	11	18	10	18	SHRM46916	30	68				47	25	16	0.4
625	M12x1.75	11	19	10	23	SHRM49301	28	68				47	25	37	0.4
1,050	M12x1.75	18	24	13	27	SHRM46608	48	96				66	38	37	1.0
1,050	M12x1.75	22	31	19	19	SHRM46924	60	121	SHRM47124	110	171	89	51	37	2.5
1,050	M14x2.00	22	31	19	29	SHRM46928	58	121	SHRM47128	108	171	89	51	40	2.5
1,900	M16x2.00	22	31	19	24	SHRM46933	56	121	SHRM47126	106	171	89	51	80	2.5
1,900	M16x2.00	22	31	19	29	SHRM46930	56	121	SHRM47130	106	171	89	51	80	2.5
1,900	M18x2.50	22	31	19	29	SHRM46934	54	121	SHRM47134	104	171	89	51	90	2.5
2,150	M20x2.50	22	31	19	29	SHRM46938	52	121	SHRM47132	102	171	89	51	135	2.7
2,150	M20x2.50	22	31	19	34	SHRM46936	52	121	SHRM47136	102	171	89	51	135	2.7
2,650	M22x2.50	22	32	19	39	SHRM49302	50	121	SHRM49351	100	171	89	51	311	3.0
2,850	M24x3.00	22	32	19	39	SHRM49303	48	121	SHRM49353	98	171	89	51	311	3.0
3,000	M20x2.50	36	43	25	27	SHRM46941	78	166	SHRM47140	118	206	131	76	135	6.7
3,000	M20x2.50	36	43	25	32	SHRM46942	78	166	SHRM47142	118	206	131	76	135	6.7
3,000	M22x2.50	36	43	25	37	SHRM46944	76	166	SHRM47144	116	206	131	76	135	7.0
4,200	M24x3.00	36	43	25	32	SHRM46947	74	166	SHRM47146	114	206	131	76	311	7.0
4,200	M24x3.00	36	43	25	37	SHRM46948	74	166	SHRM47148	114	206	131	76	311	7.0
4,200	M30x3.50	36	43	25	58				SHRM46950	108	206	131	76	637	7.0
5,000	M33x3.50	36	48	25	42	SHRM49304	65	166	SHRM49355	105	206	131	76	637	8.5
5,500	M36x4.00	36	48	25	52	SHRM49305	62	166	SHRM49357	102	206	131	76	1085	8.5

Continued on next page

Rated Loads (KGS)	Thread Size	A	C	D	E	Standard U-Bar			Long U-Bar			G	H	Torque (N-M)	WT. (LBS)
						Part No.	B	F	Part No.	B	F				
7,000	M30x3.50	45	54	32	42	SHRM46956	106	222				165	95	637	15.0
7,000	M30x3.50	45	54	32	46	SHRM46955	106	222				165	95	637	15.0
7,000	M30x3.50	45	54	32	62	SHRM46958	106	222				165	95	637	15.0
7,000	M30x3.50	45	54	32	67	SHRM46957	106	222				165	95	637	15.0
7,000	M33x3.50	45	54	32	67	SHRM46960	103	222				165	95	637	15.0
8,500	M36x4.00	45	55	32	56	SHRM49306	100	222				165	95	1085	16.0
9,000	M39x4.00	45	55	32	56	SHRM49307	97	222				165	95	1085	17.0
9,250	M42x4.50	45	55	32	66	SHRM49308	94	222				165	95	1085	18.0
9,500	M45x4.50	45	55	32	66	SHRM49309	91	222				165	95	1085	18.0
9,500	M46x5.00	45	55	32	66	SHRM49310	90	222				165	95	1085	18.0
10,000	M48x5.00	45	55	32	66	SHRM49311	88	222				165	95	1085	18.0
10,000	M33x3.50	50	62	38	58	SHRM46961	140	259				189	109	637	23.0
10,000	M33x3.50	50	62	38	68	SHRM46962	140	259				189	109	637	23.0
11,000	M36x4.00	57	71	44	58	SHRM46963	166	317				217	124	1085	35.0
11,000	M36x4.00	57	71	44	63	SHRM46966	166	317				217	124	1085	35.0
11,000	M36x4.00	57	71	44	68	SHRM46964	166	317				217	124	1085	35.0
12,500	M42x4.50	57	71	44	68	SHRM46965	160	317				217	124	1085	36.0
12,500	M42x4.50	57	71	44	83	SHRM46968	160	317				217	124	1085	36.0
13,500	M48x5.00	57	71	44	68	SHRM46980	154	317				217	124	1085	38.0
13,500	M48x5.00	57	71	44	83	SHRM46970	154	317				217	124	1085	38.0
13,500	M48x5.00	57	71	44	88	SHRM46979	154	317				217	124	1085	38.0
13,500	M56x5.50	57	71	44	88	SHRM46973	154	317				217	124	1085	38.0
14,500	M52x5.00	57	77	44	83	SHRM49312	150	317				217	124	1085	42.0
15,500	M56x5.50	57	77	44	83	SHRM49313	146	317				217	124	1085	42.0
16,500	M64x6.00	57	77	44	93	SHRM49314	138	317				217	124	2847	42.0
22,300	M64x6.00	76	104	57	101	SHRM46972	204	428				271	165	2847	86.0
24,500	M72x6.00	76	110	57	100	SHRM49315	196	428				296	165	5830	92.0
26,500	M80x6.00	76	110	57	110	SHRM49316	188	428				296	165	5830	92.0
31,500	M72x6.00	95	133	70	132	SHRM46988	220	495				359	206	5830	165.0
31,500	M80x6.00	95	133	70	132	SHRM46989	200	495				359	206	5830	165.0
33,000	M90x6.00	95	133	70	140	SHRM49317	200	495				359	206	6914	280.0
33,000	M100x6.00	95	133	70	150	SHRM49318	200	495				359	206	6914	280.0
44,600	M90x6.00	102	153	83	177	SHRM46990	235	561				404	218	6914	260.0
44,600	M100x6.00	102	153	83	200	SHRM46994	235	561				404	218	6914	280.0