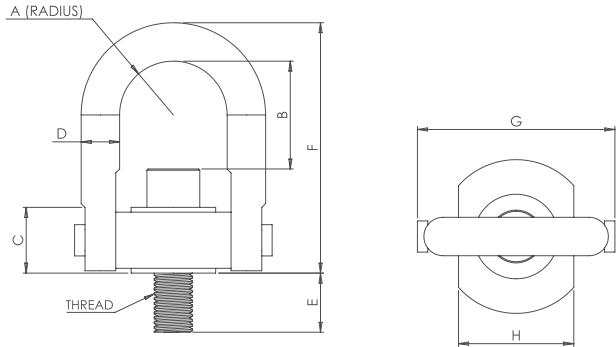


Safety Swivel Hoist Ring



KEY FEATURES

- / 200% Proof-Load Tested with Serial Number for Traceability
 - / Swivels 360° - Pivots 180°
 - / Material: Alloy Steel
 - / Finish: Black Oxide (Also available: Cadmium Plated, Electroless Nickel Plated, Zinc Plated)
 - / Safety Factor: 5:1
- / Magnetic Particle Inspected
 - / Certified Heat Treatment
 - / Rated at 100% from 0°-90°
 - / Fatigue Tested to 20,000 Cycles at 1-1/2x the Rated Load
 - / Meets or Exceeds the Requirements of ASME B30.26
 - / Thread: Longer Thread Projection and Fine Threads Available
 - / Comforms to CE



Rated Loads (LBS)	Thread Size	A	C	D	E	Standard U-Bar			Long U-Bar			G	H	Torque (FT-LBS)	WT. (LBS)
						Part No.	B	F	Part No.	B	F				
600	1/4-20	0.43	0.71	3/8	0.54	SHR46100	1.27	2.67				1.84	1.00	6	0.3
800	5/16-18	0.43	0.71	3/8	0.29	SHR46102	1.27	2.67				1.84	1.00	7	0.3
800	5/16-18	0.43	0.71	3/8	0.54	SHR46104	1.27	2.67				1.84	1.00	7	0.3
1,000	3/8-16	0.43	0.71	3/8	0.54	SHR46106	1.27	2.67				1.84	1.00	12	0.3
1,250	7/16-14	0.43	0.73	3/8	0.79	SHR46351	1.20	2.67				1.84	1.00	22	0.4
1,500	1/2-13	0.43	0.73	3/8	0.79	SHR46352	1.15	2.67				1.84	1.00	28	0.4
2,000	7/16-14	0.70	0.93	1/2	1.07	SHR46606	1.90	3.77				2.58	1.49	22	1.0
2,500	1/2-13	0.70	0.93	1/2	1.07	SHR46602	1.84	3.77				2.58	1.49	28	1.0
2,000	7/16-14	0.88	1.22	3/4	0.78	SHR46000	2.37	4.78	SHR46638	4.34	6.72	3.52	1.99	22	2.6
2,500	1/2-13	0.88	1.22	3/4	0.78	SHR46008	2.31	4.78	SHR46644	4.25	6.72	3.52	1.99	28	2.6
2,500	1/2-13	0.88	1.22	3/4	1.03	SHR46010	2.31	4.78	SHR46646	4.25	6.72	3.52	1.99	28	2.6
2,500	1/2-13	0.88	1.22	3/4	1.28	SHR46012	2.31	4.78	SHR46648	4.25	6.72	3.52	1.99	28	2.6
2,500	9/16-12	0.88	1.22	3/4	0.78	SHR46007	2.25	4.78	SHR46651	4.19	6.72	3.52	1.99	30	2.6
4,000	5/8-11	0.88	1.22	3/4	0.78	SHR46002	2.18	4.78	SHR46641	4.12	6.72	3.52	1.99	60	2.6
4,000	5/8-11	0.88	1.22	3/4	1.03	SHR46004	2.18	4.78	SHR46640	4.12	6.72	3.52	1.99	60	2.6
4,000	5/8-11	0.88	1.22	3/4	1.28	SHR46006	2.18	4.78	SHR46642	4.12	6.72	3.52	1.99	60	2.6
4,000	5/8-11	0.88	1.22	3/4	1.53	SHR46005	2.18	4.78	SHR46643	4.12	6.72	3.52	1.99	60	2.6
5,000	3/4-10	0.88	1.22	3/4	1.03	SHR46014	2.06	4.78	SHR46650	4.00	6.72	3.52	1.99	100	3.0
5,000	3/4-10	0.88	1.22	3/4	1.53	SHR46018	2.06	4.78	SHR46654	4.00	6.72	3.52	1.99	100	3.0
6,000	7/8-9	0.88	1.24	3/4	1.53	SHR46353	1.94	4.78	SHR41604	3.88	6.72	3.52	1.99	160	3.0
6,500	1-8	0.88	1.24	3/4	1.53	SHR46354	1.71	4.78	SHR41606	3.75	6.72	3.52	1.99	230	3.0
7,000	3/4-10	1.40	1.71	1	1.04	SHR46204	3.06	6.52	SHR46658	4.65	8.11	5.14	3.00	100	7.0

Continued on next page

Rated Loads (LBS)	Thread Size	A	C	D	E	Standard U-Bar			Long U-Bar			G	H	Torque (FT-LBS)	WT. (LBS)
						Part No.	B	F	Part No.	B	F				
7,000	3/4-10	1.40	1.71	1	1.54	SHR46206	3.06	6.52	SHR46660	4.65	8.11	5.14	3.00	100	7.0
8,000	7/8-9	1.40	1.71	1	1.04	SHR46202	2.93	6.52	SHR46656	4.52	8.11	5.14	3.00	160	7.0
8,000	7/8-9	1.40	1.71	1	1.29	SHR46203	2.93	6.52	SHR46657	4.52	8.11	5.14	3.00	160	7.0
8,000	7/8-9	1.40	1.71	1	1.54	SHR46205	2.93	6.52	SHR46655	4.52	8.11	5.14	3.00	160	7.0
10,000	1-8	1.40	1.71	1	1.29	SHR46210	2.81	6.52	SHR46662	4.40	8.11	5.14	3.00	230	7.5
10,000	1-8	1.40	1.71	1	1.54	SHR46212	2.81	6.52	SHR46664	4.40	8.11	5.14	3.00	230	7.5
10,000	1-8	1.40	1.71	1	2.29	SHR46214	2.81	6.52	SHR46666	4.40	8.11	5.14	3.00	230	7.5
10,000	1 1/8-7	1.40	1.71	1	2.29	SHR46216	2.69	6.52	SHR46668	4.28	8.11	5.14	3.00	230	7.5
10,000	1 1/8-8	1.40	1.71	1	2.29	SHR46217	2.69	6.52	SHR46669	4.28	8.11	5.14	3.00	230	7.5
11,500	1 1/4-7	1.40	1.88	1	2.10	SHR46355	2.44	6.52	SHR41612	4.24	8.11	5.14	3.00	470	8.0
12,000	1 3/8-6	1.40	1.88	1	2.10	SHR46356	2.31	6.52	SHR41614	4.13	8.11	5.14	3.00	470	8.0
12,500	1 1/2-6	1.40	1.88	1	2.10	SHR46357	2.19	6.52	SHR41616	4.00	8.11	5.14	3.00	800	8.0
15,000	1 1/4-7	1.75	2.11	1-1/4	1.89	SHR46802	4.12	8.73				6.50	3.76	470	14.0
15,000	1 1/4-8	1.75	2.11	1-1/4	1.89	SHR46805	4.12	8.73				6.50	3.76	470	14.0
15,000	1 3/8-6	1.75	2.11	1-1/4	1.89	SHR46806	4.06	8.73				6.50	3.76	470	14.5
15,000	1 3/8-8	1.75	2.11	1-1/4	1.89	SHR46807	4.06	8.73				6.50	3.76	470	14.5
16,500	1 1/2-6	1.75	2.17	1-1/4	2.80	SHR46359	4.02	8.73				6.50	3.76	800	16.0
17,000	1 5/8-5 1/2	1.75	2.17	1-1/4	2.80	SHR46360	3.90	8.73				6.50	3.76	800	16.0
17,500	1 3/4-5	1.75	2.17	1-1/4	2.80	SHR46361	3.77	8.73				6.50	3.76	800	16.0
18,000	1 7/8-5	1.75	2.17	1-1/4	2.80	SHR46362	3.65	8.73				6.50	3.76	800	16.0
18,500	2-4 1/2	1.75	2.17	1-1/4	2.80	SHR46363	3.52	8.73				6.50	3.76	800	16.0
20,000	1 3/8-6	2.00	2.43	1-1/2	2.50	SHR46702	5.50	10.20				7.46	4.31	540	23.0
24,000	1 1/2-6	2.25	2.81	1-3/4	2.70	SHR46404	6.41	12.47				8.55	4.87	800	34.0
24,000	1 1/2-8	2.25	2.81	1-3/4	2.70	SHR46405	6.41	12.47				8.55	4.87	800	34.0
24,000	1 3/4-5	2.25	2.81	1-3/4	3.20	SHR46408	6.16	12.47				8.55	4.87	800	34.0
24,000	1 3/4-8	2.25	2.81	1-3/4	3.20	SHR46406	6.16	12.47				8.55	4.87	800	34.0
30,000	2-4 1/2	2.25	2.81	1-3/4	3.20	SHR46400	5.91	12.47				8.55	4.87	800	36.0
30,000	2-8	2.25	2.81	1-3/4	3.20	SHR46440	5.91	12.47				8.55	4.87	800	36.0
30,000	2 1/4-4 1/2	2.25	2.81	1-3/4	3.20	SHR46431	5.66	12.47				8.55	4.87	800	40.0
30,000	2 1/4-8	2.25	2.81	1-3/4	3.20	SHR46435	5.66	12.47				8.55	4.87	800	40.0
32,500	2 1/4-4 1/2	2.25	3.03	1-3/4	2.90	SHR46364	5.86	12.47				8.55	4.87	800	40.0
35,000	2 1/2-4	2.25	3.03	1-3/4	3.90	SHR46365	5.63	12.47				8.55	4.87	2100	40.0
35,000	2 1/2-8	2.25	3.03	1-3/4	3.90	SHR46368	5.63	12.47				8.55	4.87	2100	40.0
50,000	2 1/2-8	3.00	4.09	2-1/4	4.00	SHR47002	8.03	16.87				10.67	6.52	2100	88.0
50,000	2 1/2-4	3.00	4.09	2-1/4	4.00	SHR47006	8.03	16.87				10.67	6.52	2100	88.0
50,000	2 3/4-4	3.00	4.09	2-1/4	4.00	SHR47008	7.75	16.87				10.67	6.52	2100	90.0
50,000	2 3/4-8	3.00	4.09	2-1/4	4.00	SHR47010	7.75	16.87				10.67	6.52	2100	90.0
55,000	2 3/4-4	3.00	4.34	2-1/4	4.00	SHR46366	6.16	16.87				11.67	6.52	2100	92.0
60,000	3-4	3.00	4.34	2-1/4	5.00	SHR46367	6.16	16.87				11.67	6.52	4300	92.0
75,000	3-4	3.75	5.27	2-3/4	5.25	SHR47200	8.48	19.50				14.15	8.10	4300	166.0
75,000	3-8	3.75	5.27	2-3/4	5.25	SHR47202	8.48	19.50				14.15	8.10	4300	166.0
80,000	3 1/2-4	3.75	5.27	2-3/4	5.00	SHR46332	7.98	19.50				14.15	8.10	5100	172.0
80,000	3 1/2-8	3.75	5.27	2-3/4	5.00	SHR46334	7.98	19.50				14.15	8.10	5100	172.0
100,000	3 1/2-4	4.00	6.06	3-1/4	7.00	SHR47402	9.28	22.09				15.90	8.60	5100	265.0
100,000	3 1/2-8	4.00	6.06	3-1/4	7.00	SHR47406	9.28	22.09				15.90	8.60	5100	265.0
250,000	6-4	6.00	14.00	5	9.00	SHR47602	14.00	33.00				25.00	13.00	9900	790.0