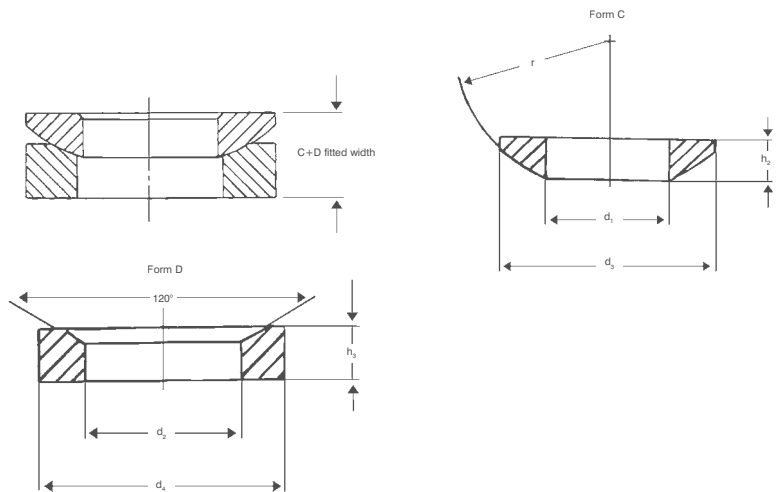


Spherical Seat and Dished Washers – Metric

DIN 6319 C/D



MATERIAL

- / DIN 6319 C/D
- / D: case-hardened steel (hardening depth 0.2 - 0.4mm)

APPLICATIONS

Concave and convex washers are suitable for locking mechanical parts on non-parallel surfaces.

ORDERING INSTRUCTIONS

- Spherical washers are sold singularly but can be requested in pairs. When ordering please use the below part codes followed with either:
- / C: Form C for the convex washer
 - / D: Form D for the concave washer
- Example: S1728-1950C
- / Dimensions are set out for both C & D under the same part code in the table below.



Part Reference	Screw	d1	d2	d3	d4	h2	h3	Total Width (c+d)	r
S1728-1950	M6	6.4	7.1	12	12	2.3	2.8	4.0	9
S1737-1869	M8	8.4	9.6	17	17	3.2	3.5	5.0	12
S1745-1877	M10	10.5	12.0	21	21	4.0	4.2	6.3	15
S1752-1885	M12	13.0	14.2	24	24	4.6	5.0	8.0	17
S1760-1893	M14	15.0	16.5	28	28	5.0	5.6	8.6	22
S1778-1901	M16	17.0	19.0	30	30	5.3	6.2	9.3	22
S1786-1919	M20	21.0	23.2	36	36	6.3	7.5	11.5	27
S1794-1927	M24	25.0	28.0	44	44	8.2	9.5	15.0	32
S1802-1935	M30	31.0	35.0	56	56	11.2	12.0	19.7	41
S1810-1943	M36	37.0	42.0	68	68	14.0	15.0	23.0	50
S1836-1968	M42	43.0	49.0	78	78	17.0	18.0	29.0	58
S1844-1976	M48	50.0	56.0	92	92	21.0	22.0	36.0	67