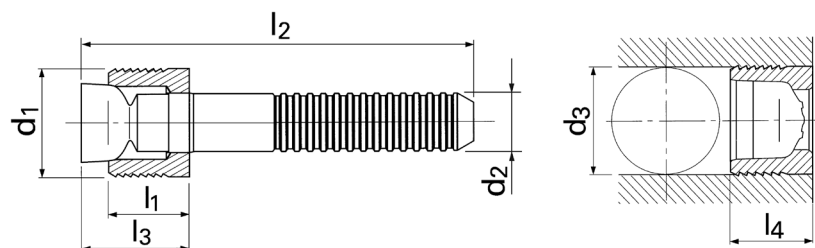




KOENIG EXPANDER® SEALING PLUGS

Series LK 950



Material:

Sleeve: Case Hardening Steel,
Soft Annealed Gun Finish
Mandrel: Steel, Special Oil Film Lubrication

Important:

See installation instructions on page 81
Installation requirements on page 73
Long mandrel versions available upon request

Part Number	d ₁	l ₁	d ₂	l ₂	d ₃ *	l ₃ max.	l ₄ max.	Packaging Unit	Weight in gram/pcs.
LK 950 – 040	4.0	3.7	2.2	36	4.0	5.5	4.0	1000	1.26
LK 950 – 050	5.0	4.5	3.0	36	5.0	6.9	4.8	1000	2.28
LK 950 – 060	6.0	5.0	3.4	36	6.0	7.7	5.3	1000	3.12
LK 950 – 070	7.0	5.5	4.2	34	7.0	8.5	5.8	500	4.70
LK 950 – 080	8.0	6.5	4.3	34	8.0	9.8	6.8	500	5.32
LK 950 – 090	9.0	6.5	4.7	34	9.0	9.8	6.8	500	6.53
LK 950 – 100	10.0	6.5	5.1	36	10.0	9.8	6.8	500	8.23
LK 950 – 120	12.0	7.5	5.9	36	12.0	11.7	7.8	500	12.21
LK 950 – 140	14.0	8.0	5.9	36	14.0	12.2	8.7	250	13.98
LK 950 – 160	16.0	10.5	5.9	42	16.0	16.5	11.5	250	21.17
LK 950 – 180	18.0	11.0	6.60	50.0	18.0	17.7	13.0	200	29.99
LK 950 – 200	20.0	11.0	6.60	50.0	20.0	17.7	13.0	125	34.55

Dimensions in millimeters

*Bore tolerance: See installation instructions on page 81

PRESSURE PERFORMANCE

Series LK 950 mm	①	②	③	⑤	⑥	⑦	⑧
	ETG – 100 / 44SMn28 AISI 1144	C15Pb / 1.0403 ~ SAE 1015 (10L15)	EN 1563: GJS – 600 – 3 ASTM A536: 80 – 60 – 03	EN 1561: GJL – 250 ASTM A48: NO.35	AlCu4Mg1 / EN AW – 2024 – T3 AA: 2024 T4/T6*	AlMgSiPb / EN AW – 6012 – T6 AA: 6012 – T6	G – AlSi7Mg / EN – AC – 42100 ASTM/UNS: A356
Base Material of the Installation							
Ø 4 – 20	180 bar / 2600 psi 60 bar / 850 psi						

Proof Pressure Test – ⑧

Max. Allowable Working Pressure = Nominal Pressure

*SFC KOENIG's North American Engineering Department utilizes 2024 – T4/T6 as a test base material.