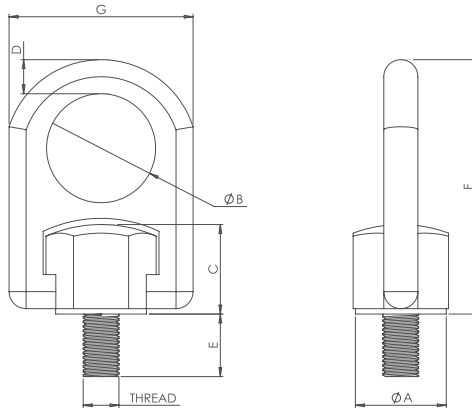


Forged Swivel Hoist Ring



KEY FEATURES

- / 200% Proof-Load Tested with Serial Number for Traceability
- / Swivels 360° - Pivots 180°
- / Material: Alloy Steel
- / Finish: Black Oxide (Also Available: Cadmium Plated, Electroless Nickel Plated, Zinc Plated)

- / Safety Factor: 5:1
- / Magnetic Particle Inspected
- / Certified Heat Treatment
- / Rated at 100% from 0°-90°
- / Meets or Exceeds the Requirements of ASME B30.26.
- / Conforms to CE



Part No.	Rated Load (LBS)	Thread Size	Standard							Torque (FT-LBS)	Weight (LBS)
			A	B	C	D	E	F	G		
FHR56100	600	1/4-20	1.32	1.40	1.16	0.44	0.50	3.29	2.38	5	1.0
FHR56102	800	5/16-18	1.32	1.40	1.16	0.44	0.50	3.29	2.38	7	1.0
FHR56104	800	5/16-18	1.32	1.40	1.16	0.44	1.00	3.29	2.38	7	1.0
FHR56106	1,000	3/8-16	1.32	1.40	1.16	0.44	0.50	3.29	2.38	12	1.0
FHR56107	1,000	3/8-16	1.32	1.40	1.16	0.44	1.00	3.29	2.38	12	1.0
FHR56008	2,500	1/2-13	2.23	2.40	1.97	0.75	0.75	5.60	4.05	28	4.0
FHR56010	2,500	1/2-13	2.23	2.40	1.97	0.75	1.00	5.60	4.05	28	4.0
FHR56012	2,500	1/2-13	2.23	2.40	1.97	0.75	1.25	5.60	4.05	28	4.0
FHR56002	4,000	5/8-11	2.23	2.40	1.97	0.75	0.75	5.60	4.05	60	4.0
FHR56004	4,000	5/8-11	2.23	2.40	1.97	0.75	1.00	5.60	4.05	60	4.0
FHR56006	4,000	5/8-11	2.23	2.40	1.97	0.75	1.25	5.60	4.05	60	4.0
FHR56014	5,000	3/4-10	2.23	2.40	1.97	0.75	1.00	5.60	4.05	100	4.0
FHR56018	5,000	3/4-10	2.23	2.40	1.97	0.75	1.50	5.60	4.05	100	4.0
FHR56204	7,000	3/4-10	2.95	3.20	2.62	1.00	1.00	7.48	5.40	100	9.0
FHR56203	7,000	3/4-10	2.95	3.20	2.62	1.00	1.25	7.48	5.40	100	9.0
FHR56206	7,000	3/4-10	2.95	3.20	2.62	1.00	1.50	7.48	5.40	100	9.0
FHR56202	8,000	7/8-9	2.95	3.20	2.62	1.00	1.00	7.48	5.40	160	9.0
FHR56205	8,000	7/8-9	2.95	3.20	2.62	1.00	1.25	7.48	5.40	160	9.0
FHR56210	10,000	1-8	2.95	3.20	2.62	1.00	1.25	7.48	5.40	230	9.0
FHR56212	10,000	1-8	2.95	3.20	2.62	1.00	1.50	7.48	5.40	230	9.0
FHR56214	10,000	1-8	2.95	3.20	2.62	1.00	2.25	7.48	5.40	230	9.0
FHR56802	15,000	1 1/4-7	3.73	4.00	3.28	1.25	2.00	9.35	6.75	470	18.0
FHR56804	15,000	1 1/4-7	3.73	4.00	3.28	1.25	2.75	9.35	6.75	470	18.0
FHR56702	20,000	1 3/8-6	3.73	4.00	3.28	1.25	2.75	9.35	6.75	540	19.0
FHR56404	24,000	1 1/2-6	3.73	4.00	3.28	1.25	2.75	9.35	6.75	800	19.0