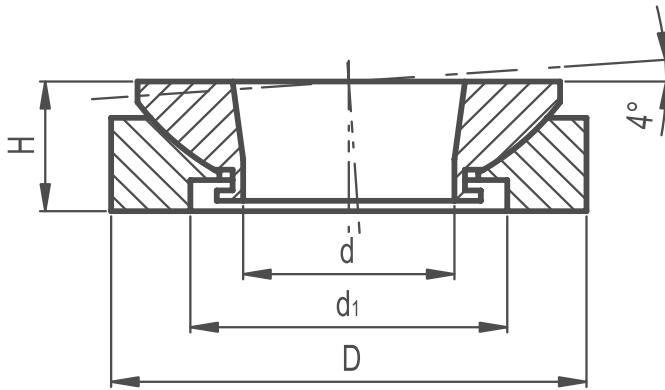


Levelling Washers

319

POSITIONING & MACHINE ELEMENTS



MATERIAL

/ Zinc-plated steel.

APPLICATIONS

Levelling washers are suitable for locking mechanical parts on non-parallel surfaces. The coupling of the spherical surfaces of the two "non-dismountable" washers allows a high load resistance.



Part Reference	D	H	d	d1	Max Screw Dimension	Static Load (N)
LW1	25	8	8.5	15	M6	40000
LW2	32	10	13	20	M10	65000
LW3	45	12.5	20	30	M16	12000
LW4	58	16	29	38	M24	210000
LW5	70	20	36	48	M30	330000
LW6	80	20	44	61	M36	495000