

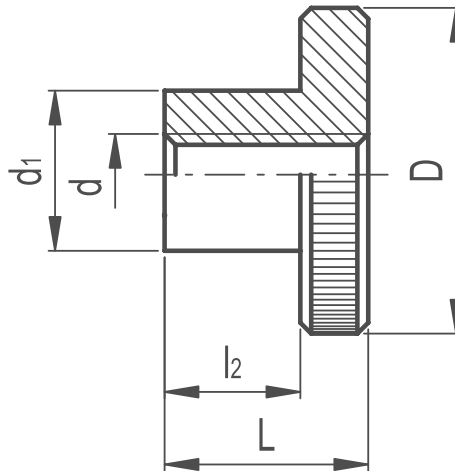
Knurled Nut

DIN 466



331

POSITIONING & MACHINE ELEMENTS



/ Material

Turned black-oxide steel.

/ Assembly

Hub, tapped through hole.

/ Threaded body

AISI 303 stainless steel, sandblasted matte finish.

/ Assembly

Hub, tapped through hole.

FEATURES AND APPLICATIONS

AISI 303 stainless steel, thanks to its high resistance to corrosion, allows the application of these knobs on machines and equipment in those sectors where laws or particular hygienic, climatic and environmental factors make it mandatory to use corrosion resistant materials.



Knurled Nut DIN 466

Part Reference	Hole d	D	L	d1	l2
KN1-3710	M3	12	7.5	6	5
KN2-3710	M4	16	9.5	8	6
KN3-3710	M5	20	11.5	10	7.5
KN4-3710	M6	24	15	12	10
KN5-3710	M8	30	18	16	12
KN6-3710	M10	36	23	20	15
KN7-3710	M12	40	25	22	15

Knurled Nut Stainless Steel DIN 466

Part Reference	Hole d	D	L	d1	l2
KN1SS	M4	16	9.5	8	6
KN2SS	M5	20	11.5	10	7.5
KN3SS	M6	24	15	12	10
KN4SS	M8	30	18	16	12