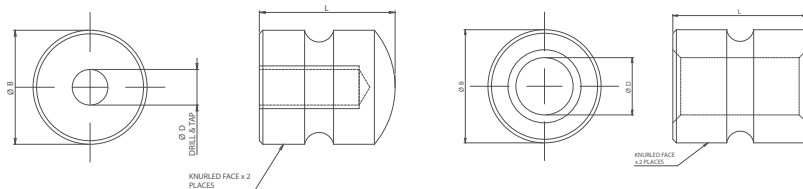


Knurled Mould Clamps

A Boneham registered design for Split Moulds

65

BONEHAM



KEY FEATURES

- / Mild Steel
- / Chemically Blacked
- / Deep Knurl
- / Resin Recess
- / Compact Design

APPLICATION

Knurled Mould Clamps are designed by Boneham to be used in the composite mold process. The split composite mould process can require accurate alignment and good torque resistance. The GSCL mold clamp range is relatively compact and reduces mould scrappage whilst providing dedicated components which reduce subcontract and multicomponent requirements. The bushing and nut are purchased separately so a more precise bushing, such as a GS or PP type bushing can be used if required.

ORDERING INSTRUCTIONS

When ordering check the size of bolt and thread required and choose corresponding part number. Example:

/ M8 Bolt: Bushing: GSCL-8MM-B and Nut: GSCL-8MM-N

If a shoulder bolt is being used. Example:

/ 8MM Shoulder Bolt with 6mm thread: Bushing GS14-8.00MM and Nut: GSCL-6MM-N

Bushing Types

-B: Suitable for standard bolts

NOTES

/ Can be used as a nut and bushing assembly or with Boneham pins and drill bushes



Knurled Bushing – For use with standard bolt

Part Code	Bore D	Outside Diameter B	Length L	Grooves
GSCL-6MM-B	6.1mm	5/8"	3/4"	1
GSCL-8MM-B	8.1mm	5/8"	3/4"	1
GSCL-10MM-B	10.1mm	5/8"	3/4"	1
GSCL-12MM-B	12.1mm	3/4"	3/4"	1

Knurled Nut – For use with standard bolt

Part Code	D	Outside Diameter B	Length L	Grooves
GSCL-6MM-N	M6	5/8"	3/4"	1
GSCL-8MM-N	M8	5/8"	3/4"	1
GSCL-10MM-N	M10	5/8"	3/4"	1
GSCL-12MM-N	M12	3/4"	3/4"	1