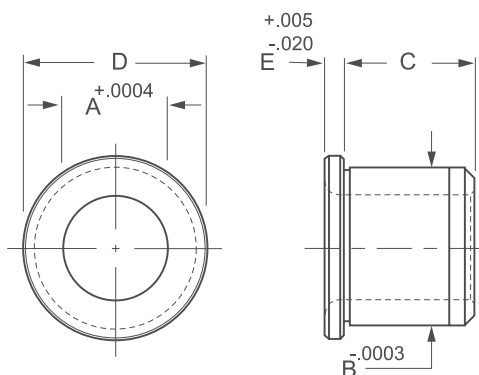


Location Pins

Liner for Bullet Nose Dowels



KEY FEATURES

- / Precision ground location system
- / Case hardened
- / Black oxide finish
- / ID / OD Concentric to 0.0003" TIR
- / INCH and Metric sizes

APPLICATION

Liners for Bullet Nose Dowels are the receiving bush element of the location system. The bushes ID and OD are concentric to within .0003 TIR.

ORDERING INSTRUCTIONS

When ordering identify the ID required and identify the part number from the chart below. Example: BNL3751

NOTES

If you cannot find what you are looking for, Boneham can manufacture special sizes and materials to specification.



INCH

Part No.	Dimensions				
	A .0000 / +.0004		B +.0000 -.0003	C +/- .003	D
	NOMINAL	ACTUAL			E
BNL2501	1/4	0.2501	0.5017	3/8	0.625
BNL3126	5/16	0.3126	0.5017	3/8	0.625
BNL3751	3/8	0.3751	0.6267	1/2	0.750
BNL5001	1/2	0.5001	0.7518	5/8	0.875

METRIC

Part No.	Dimensions				
	A .0000 / +.0004	B -.0003	C	D	E +.005 / -.020
BNLM600	6mm	10mm	7mm	13mm	3mm
BNLM800	8mm	12mm	7mm	15mm	3mm
BNLM1000	10mm	15mm	9mm	18mm	3mm
BNLM1200	12mm	18mm	12mm	22mm	3mm