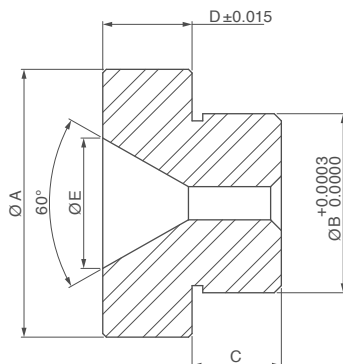


Easy-Cone Locator Bush

82

BONEHAM



KEY FEATURES

- / Rapid location
- / Hardened and Blacked
- / 60° Conical Profile
- / Ground body for accurate setting
- / Metric and Inch

APPLICATION

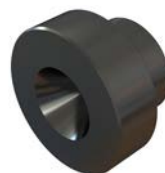
Easy Cone Locators are a reduced precision location device. Accuracy is $\pm 0.0003"$ on the OD of the bush and pin. But unlike other precision locators supplied by Boneham, they are not tied down on the conical location point. The 60° conical locating point provides rapid alignment properties. Misalignment is compensated for by the distance from the peak of the cone to edge of the entry point of the bush. This is the right solution for quick alignment of two workpieces in a repetitive production environment. A one operation preparation process can be used, boring both plates at the same time, with both OD's of the pin and bush being the same.

ORDERING INSTRUCTIONS

When ordering identify the diameter required and find the part number in the below table. Mating bushes are referenced in the table.

NOTES

Can't find what you are looking for? Boneham can manufacture special sizes and materials to specification.



IMPERIAL

Part No.	A Dia	B Dia		C	D	E Dia	Clearance Between Bush and Pin Assembly (Inch)
		NOM (Inch)	ACTUAL (Inch)				
CLB5014	3/4	1/2	0.5014	1/4	1/4	0.37	.050-.068
CLB7515	1	3/4	0.7515	3/8	3/8	0.616	.043-.061

METRIC

Part No.	A Dia	B Dia		C	D	E Dia	Clearance Between Bush and Pin Assembly (mm)
		NOM (mm)	ACTUAL (mm)				
CLBM1200	19	12	12.034	6.4	6.35	9.4	1.27-1.73
CLBM2000	25.5	20	20.038	9.5	9.52	15.65	1.09-1.55