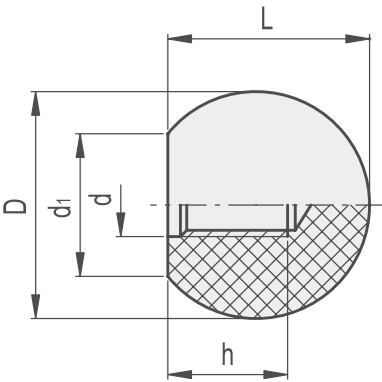


# Ball Knobs

## Tapped Hole



**MATERIAL**

- / Phenolic based (PF) Duroplast
- / Resistant to solvents, oils, greases and other chemical agents

**COLOUR**

- / Black or red, glossy finish

**STANDARD EXECUTION**

Threaded blind hole.



RAL 9005    RAL 3002



Black



Red

Part Ref.		Description	Main dimensions			Mounting hole		Weight g
Black	Red		D	L	d1	d	h min.	
BK19005	BK13002	16-M4	16	15	8	M4	7	3
BK29005	-	16-M5	16	15	8	M5	7	3
BK39005	BK23002	20-M4	20	18	12	M4	9	6
BK49005	-	20-M5	20	18	12	M5	9	6
BK59005	-	20-M6	20	18	12	M6	9	5
BK69005	-	20-M8	20	18	12	M8	9	5
BK79005	-	25-M4	25	22.5	15	M4	11	10
BK89005	-	25-M5	25	22.5	15	M5	11	10
BK99005	BK33002	25-M6	25	22.5	15	M6	11	10
BK109005	BK43002	25-M8	25	22.5	15	M8	11	9
BK119005	-	25-M10	25	22.5	15	M10	11	9
BK129005	-	30-M5	30	28	15	M5	14.5	20
BK139005	-	30-M6	30	28	15	M6	14.5	19
BK149005	BK53002	30-M8	30	28	15	M8	14.5	19
BK159005	-	30-M10	30	28	15	M10	14.5	18
BK169005	-	32-M6	32	29	18	M6	14.5	20
BK179005	-	32-M8	32	29	18	M8	14.5	20
BK189005	-	32-M10	32	29	18	M10	14.5	19
BK199005	-	35-M6	35	32.5	18	M6	18	30

Continued on next page

Part Ref.		Description	Main dimensions			Mounting hole		Weight g
Black	Red		D	L	d1	d	h min.	
BK209005	-	35-M8	35	32.5	18	M8	18	30
BK219005	BK63002	35-M10	35	32.5	18	M10	18	29
BK229005	-	35-M12	35	32.5	18	M12	18	29
BK239005	-	40-M6	40	37	22	M6	18	38
BK249005	-	40-M8	40	37	22	M8	18	37
BK259005	BK73002	40-M10	40	37	22	M10	18	36
BK269005	-	40-M12	40	37	22	M12	18	35
BK279005	-	40-M14	40	37	22	M14	18	34
BK289005	-	40-M16	40	37	22	M16	18	33
BK299005	-	45-M8	45	42.5	22	M8	20	59
BK309005	-	45-M10	45	42.5	22	M10	20	58
BK319005	BK83002	45-M12	45	42.5	22	M12	20	57
BK329005	-	45-M14	45	42.5	22	M14	20	56
BK339005	-	45-M16	45	42.5	22	M16	20	55
BK349005	-	50-M8	50	46	27	M8	21	86
BK359005	-	50-M10	50	46	27	M10	21	85
BK369005	-	50-M12	50	46	27	M12	21	84
BK379005	-	50-M14	50	46	27	M14	21	83
BK389005	-	50-M16	50	46	27	M16	21	82