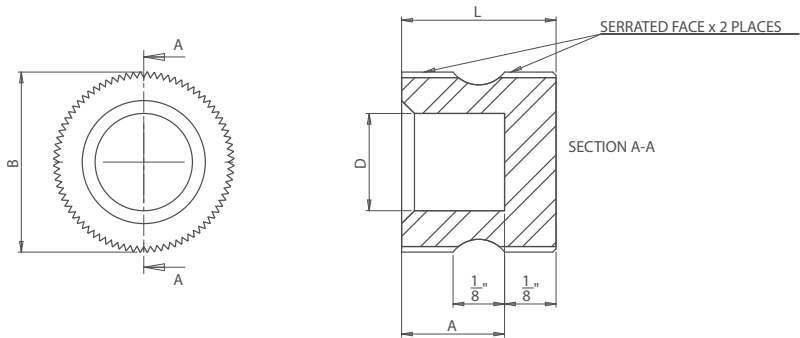


# Blind Polygrip Serrated Bush

## Polygrip Serrated GS Bush Blind Hole



### KEY FEATURES

- / Carbon Tool Steel
- / Hardened
- / Blind Bore

### APPLICATION

Boneham Blind Serrated Bushes are hardened like the standard GS bushes, but with a blind bore. The hardened nature of the bush provides protection for the mould integrity. These bushes retain the same features as the standard Polygrip Bushes. The serrations prevent rotational movement and the recess allows resin to lock the bush in place.

### ORDERING INSTRUCTIONS

When ordering: Choose the ID required based on the pin size in use and select the part number from the corresponding length. Part numbers are formed using the 'Bush Reference' code followed by the bore size. For example: BLGS14-8.00MM

### NOTES

Specials Manufactured by BONEHAM



## INCH

Part Code	Bore Dia (D)	Limits	OD (B)	Depth of Chamfer (C)	Length (L)
BLGS7-1/4"	1/4"	+0.001 / +0.002	7/16"	1/32"	3/8"
BLGS8-1/4"	1/4"	+0.001 / +0.002	7/16"	1/32"	1/2"
BLGS9-1/4"	1/4"	+0.001 / +0.002	7/16"	1/32"	3/4"
BLGS13-5/16"	5/16"	+0.001 / +0.002	5/8"	5/8"	3/8"
BLGS14-5/16"	5/16"	+0.001 / +0.002	5/8"	5/8"	1/2"
BLGS15-5/16"	5/16"	+0.001 / +0.002	5/8"	5/8"	3/4"

## METRIC

Part Code	Bore Dia (D)	Limits	OD (B)	Depth of Chamfer (C)	Length (L)
BLGS7-6.00MM	6mm	+0.001 / +0.002	7/16"	1/32"	3/8"
BLGS8-6.00MM	6mm	+0.001 / +0.002	7/16"	1/32"	1/2"
BLGS9-6.00MM	6mm	+0.001 / +0.002	7/16"	1/32"	3/4"
BLGS13-8.00MM	8mm	+0.001 / +0.002	5/8"	5/8"	3/8"
BLGS14-8.00MM	8mm	+0.001 / +0.002	5/8"	5/8"	1/2"
BLGS15-8.00MM	8mm	+0.001 / +0.002	5/8"	5/8"	3/4"