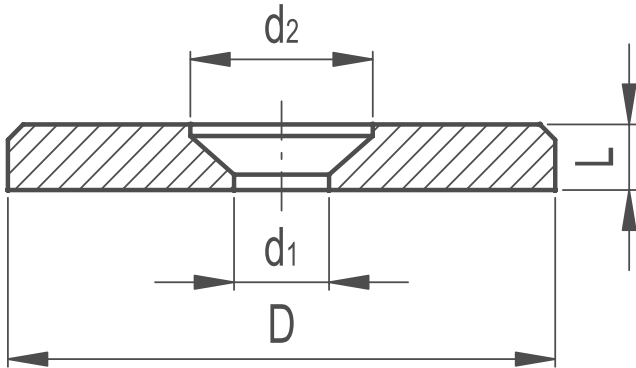
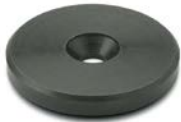


Countersunk Washers



MATERIAL
/ Turned and black-oxide steel.

APPLICATIONS
Washers are generally used on shafts to fit handwheels.
To suit countersunk screws DIN 7991 & ISO 2009.



Part Reference	Countersunk screws				
	D	L	d1	d2	DIN 7991 DIN ISO 2009
CSW1	16	3	4.3	8	M4
CSW2	20	3	4.3	8	M4
CSW3	22	3.5	5.3	10	M5
CSW4	25	3.5	5.3	10	M5
CSW5	28	3.5	5.3	10	M5
CSW6	32	4	6.4	12	M6
CSW7	36	4	6.4	12	M6
CSW8	40	5	6.4	12	M6
CSW9	45	6	6.4	12	M6
CSW10	52	6	6.4	12	M6