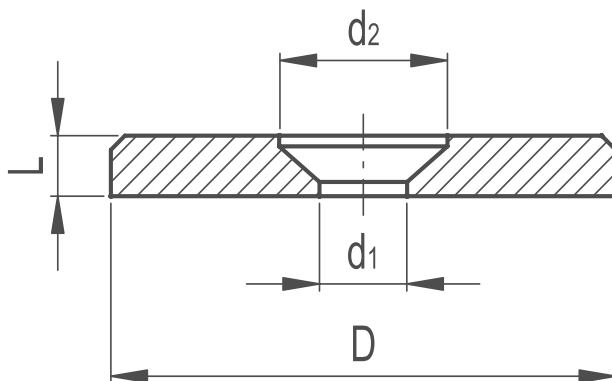


# Countersunk Washers Stainless Steel

157

CLAMPING &amp; FIXING



## MATERIAL

/ AISI 303 stainless steel, sandblasted matte finish.

## FEATURES

Washers are generally used on shafts to fit handwheels.  
To suit countersunk screws DIN 7991 & ISO 2009.

## APPLICATIONS

AISI 303 stainless steel, thanks to its high resistance to corrosion, allows the application of these washers on machines and equipment in those sectors where laws or particular hygienic, climatic and environmental factors make it mandatory to use corrosion resistant materials.



| Part Reference | Countersunk screws |     |     |    |                          |
|----------------|--------------------|-----|-----|----|--------------------------|
|                | D                  | L   | d1  | d2 | DIN 7991<br>DIN ISO 2009 |
| CSW1SS         | 16                 | 3   | 4.3 | 8  | M4                       |
| CSW2SS         | 20                 | 3   | 4.3 | 8  | M4                       |
| CSW3SS         | 22                 | 3.5 | 5.3 | 10 | M5                       |
| CSW4SS         | 25                 | 3.5 | 5.3 | 10 | M5                       |
| CSW5SS         | 28                 | 3.5 | 5.3 | 10 | M5                       |
| CSW6SS         | 32                 | 4   | 6.4 | 12 | M6                       |
| CSW7SS         | 36                 | 4   | 6.4 | 12 | M6                       |
| CSW8SS         | 40                 | 5   | 6.4 | 12 | M6                       |
| CSW9SS         | 45                 | 6   | 6.4 | 12 | M6                       |
| CSW10SS        | 52                 | 6   | 6.4 | 12 | M6                       |