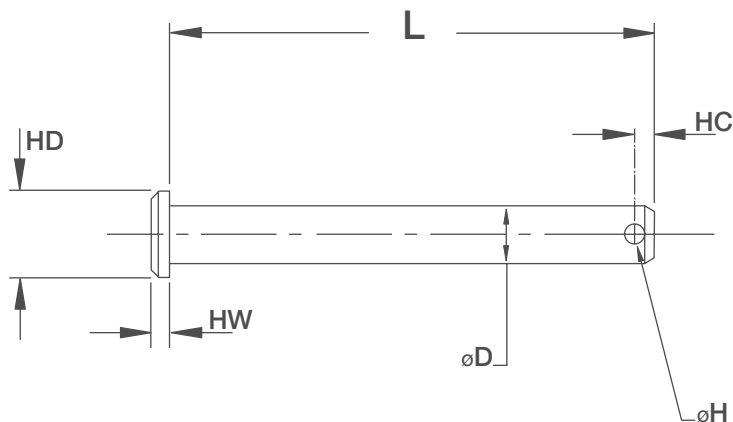


Clevis Pins – Metric

ISO 2341 B DIN 1444 B



HUGE STOCKS

VOLUME DISCOUNT

STAINLESS STEEL

MATERIAL

/ Steel Bright Zinc Plated (CPZP) –
Stainless Steel Type A2 (CPSS)

ORDERING INSTRUCTIONS

/ State CPSS for stainless steel or CPZP for
Zinc Plated. When ordering give D x L

NOTES

Some feature sizes on our clevis pins have been
altered from the standard to improve functionality
or to assemble with available retaining clips.



Dia	D	3	4	5	6	8	10	12	16	20	24
Head Dia	HD	4.5	6	8	10	14	18	20	25	30	36
Head Width	HW	1.2	1.5	1.6	2	3	4	4	4.5	5	6
Hole Dia	H	1.1	1.2	1.2	1.6	2	3.2	3.2	4	5	6.3
Hole Centre	HC	2.1	2.5	2.9	3.2	3.5	4.5	5.5	6	8	9

L \ D	3	4	5	6	8	10	12	16	20	24
10										
12										
16										
20										
25										
30										
35										
40										
50										
60										
70										
80										
90										
100										