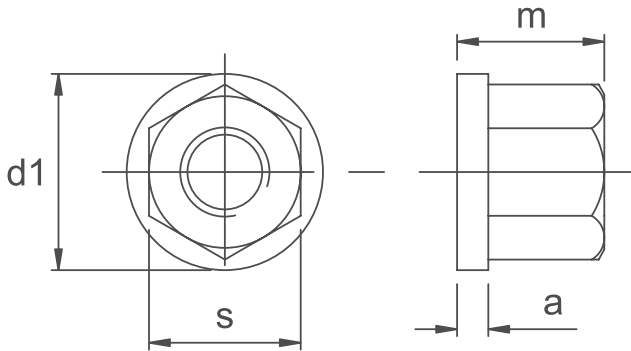


# Collar Nut

DIN 6331



**MATERIAL**  
/ Refined Steel  
/ Heat treated to Strength Class 10  
/ Turned and Milled



Part Reference	Hole	s	e	m	a	d1
CN1-2651	M6	10	11.5	9	3.0	14
CN2-2537	M8	13	15.0	12	3.5	18
CN3-2545	M10	16	19.6	15	4.0	22
CN4-2552	M12	18	21.9	18	4.0	25
CN5-2560	M14	21	25.4	21	4.5	28
CN6-2578	M16	24	27.7	24	5.0	31
CN7-2586	M18	27	31.2	27	5.0	34
CN8-2594	M20	30	34.6	30	6.0	37
CN9-2602	M22	33	36.9	33	6.0	40
CN10-2610	M24	36	41.6	36	6.0	45
CN11-2628	M27	41	47.3	40	8.0	51
CN12-2636	M30	46	53.1	45	8.0	58