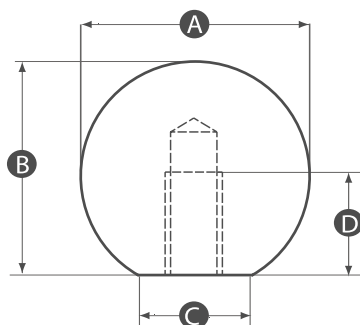


Ball Knobs

Polished Tapped Stainless Steel



MATERIAL

/ Stainless steel – 304 – Providing an attractive finish as well as high resistance to corrosion from oxidising acids, often found in clean and food environments

ASSEMBLY

/ Tapped hole one piece ball

FINISH

/ Highly polished



Part No.	A	B	C	D	Thread size
BKM416SS	16	15	8	7	M4
BKM516SS	16	15	8	7	M5
BKM616SS	16	15	8	7	M6
BKM420SS	20	18	12	9	M4
BKM520SS	20	18	12	9	M5
BKM620SS	20	18	12	9	M6
BKM625SS	25	23	15	11	M6
BKM825SS	25	23	15	11	M8
BKM1025SS	25	23	15	11	M10
BKM632SS	32	29	18	15	M6
BKM832SS	32	29	18	15	M8
BKM1032SS	32	29	18	15	M10
BKM638SS	38	35	22	18	M6
BKM838SS	38	35	22	18	M8
BKM1038SS	38	35	22	18	M10
BKM1044SS	44	37	32	20	M10
BKM1050SS	50	46	28	21	M10