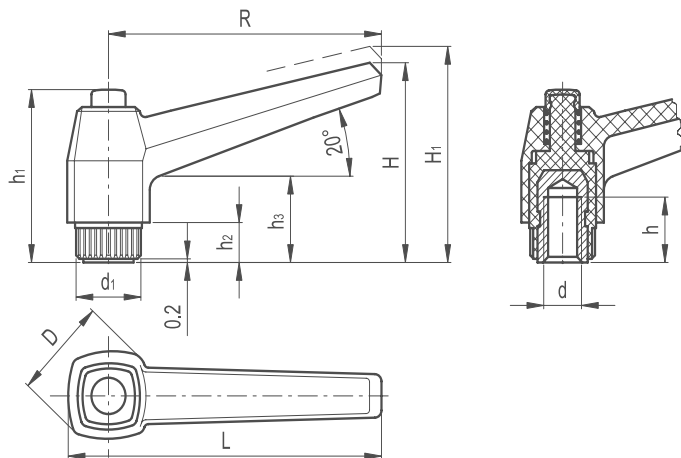


Adjustable Clamping Lever Straight Handle Female Stainless Steel

BONEHAM

233

KNOB & HANDLES



LEVER BODY

/ Glass-fibre reinforced polyamide based (PA) technopolymer
/ Resistant to solvents, oils, greases and other chemical agents

COLOUR

/ Black, matte finish

PUSH BUTTON

/ Technopolymer, black colour, matte finish

CLAMPING ELEMENT WITH RETAINING PIN

Glass-fibre reinforced technopolymer, black colour, with knurling on the protruding part to make initial tightening easier. AISI 302 stainless steel return spring.

ASSEMBLY

AISI 303 stainless steel boss, tapped blind hole.

SPECIAL EXECUTIONS ON REQUEST

(For sufficient quantities)

/ Lever body in RAL 2004 orange, RAL 6011 green, RAL 7031 grey

FEATURES AND APPLICATIONS

Particularly suitable when the lever turning angle is limited owing to lack of space. Compared to other types of adjustable handles with metal retaining screw this solution offers:

/ absolute electric insulation for the operator's hand
/ more comfortable lever release.

AISI 303 stainless steel, thanks to its high resistance to corrosion, allows the application of these adjustable handles on machines and equipment in those sectors where laws or particular hygienic, climatic and environmental factors make it mandatory to use corrosion resistant materials.

INSTRUCTIONS OF USE

For clamping, lift the lever to disengage the clamping device toothing and bring it back to start position. By releasing the lever, the return spring automatically engages the toothing.



Part Reference	R	L	D	H	H1	h1	h2	h3	d1	Mounting hole d 6h	h	Teeth No. z
ACLSHF1SS	42	50	18	32	35.5	29	6	14	12	M5	6	18
ACLSHF2SS	42	50	18	32	35.5	29	6	14	12	M6	10	18
ACLSHF3SS	63	73	23	43	46.5	37	8	17	15	M6	12	20
ACLSHF4SS	63	73	23	43	46.5	37	8	17	15	M8	13	20
ACLSHF5SS	80	92	28	54	58.5	47	10	22	19	M8	13	24
ACLSHF6SS	80	92	28	54	58.5	47	10	22	19	M10	17	24
ACLSHF7SS	100	114	33	65	69.5	54	12	25	25	M12	20	28