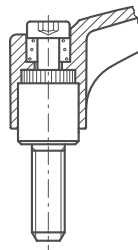
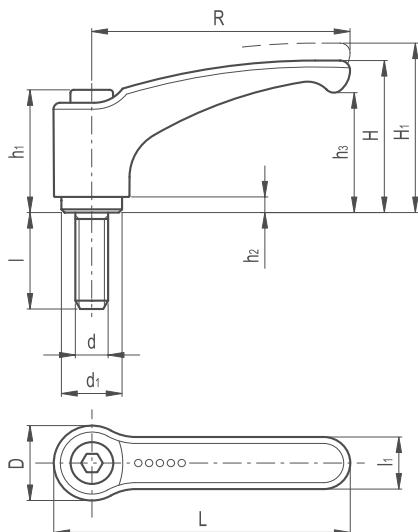


# Adjustable Clamping Lever ERM SS

251

**KNOB & HANDLES**


## LEVER BODY

/ Zinc alloy die-cast, epoxy resin coating

## COLOUR

/ RAL 2004 orange, RAL 3000 red, RAL 9006 grey,  
RAL 9005 black matte finish

## CLAMPING ELEMENT

AISI 303 stainless steel with toothed element for coupling to the lever body, stainless steel retaining screw and return spring.

## SPECIAL EXECUTIONS ON REQUEST

(For sufficient quantities)

- / Lever body in different colours
- / Chrome-plated lever
- / Clamping element with different threadings and lengths

## FEATURES AND APPLICATIONS

Particularly suitable when the lever turning angle is limited owing to lack of space. AISI 303 stainless steel, thanks to its high resistance to corrosion, allows the application of these adjustable handles on machines and equipment in those sectors where laws or particular hygienic, climatic and environmental factors make it mandatory to use corrosion resistant materials.

## INSTRUCTIONS OF USE

For clamping, lift the lever to disengage the clamping device toothing and bring it back to start position. By releasing the lever, the return spring automatically engages the toothing. If the lever cannot make a 360° rotation, the clamping element can be easily screwed by means of the hexagon socket front head screw (after having disengaged the lever).

## ERGONOMY AND DESIGN

The slightly arched shape of the lever and the ergonomic terminal enlargement give the operator a comfortable and safe grip and make the design of the handle more elegant.

