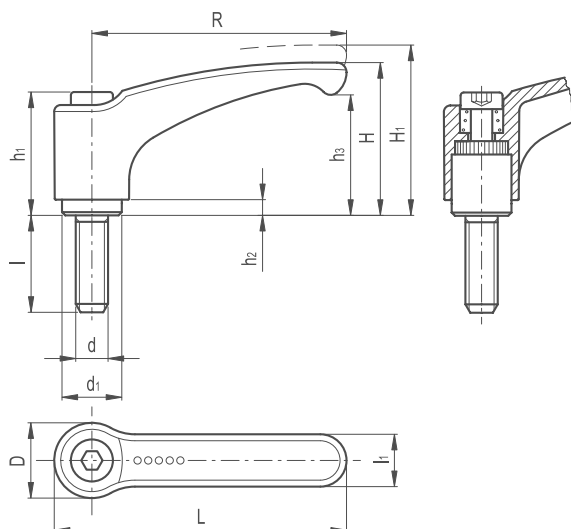


Adjustable Clamping Lever ERM



LEVER BODY

/ Zinc alloy die-cast, epoxy resin coating

COLOUR

/ RAL 2004 orange, RAL 3000 red, RAL 9006 grey,
RAL 9005 black matte finish

CLAMPING ELEMENT

Black-oxide steel with toothed element for coupling to the lever body, treated steel retaining screw and return spring.

SPECIAL EXECUTIONS ON REQUEST

(For sufficient quantities)

- / Lever body in different colours
- / Chrome-plated lever
- / Clamping element with different threadings and lengths

FEATURES AND APPLICATIONS

Particularly suitable when the lever turning angle is limited owing to lack of space.

INSTRUCTIONS OF USE

For clamping, lift the lever to disengage the clamping device tooting and bring it back to start position. By releasing the lever, the return spring automatically engages the tooting. If the lever cannot make a 360° rotation, the clamping element can be easily screwed by means of the hexagon socket front head screw (after having disengaged the lever).

ERGONOMY AND DESIGN

The slightly arched shape of the lever and the ergonomic terminal enlargement give the operator a comfortable and safe grip and make the design of the handle more elegant.



Part Reference											Thread		Teeth No.
	R	L	D	H	H1	h1	h2	h3	d1	L1	d 6h	l	
ACLP1	44	52	14.5	30	33	24.5	3.5	20.5	10	11	M4	12	18
ACLP2	44	52	14.5	30	33	24.5	3.5	20.5	10	11	M4	16	18
ACLP3	44	52	14.5	30	33	24.5	3.5	20.5	10	11	M4	20	18
ACLP4	44	52	14.5	30	33	24.5	3.5	20.5	10	11	M4	25	18
ACLP5	44	52	14.5	30	33	24.5	3.5	20.5	10	11	M4	32	18
ACLP6	44	52	14.5	30	33	24.5	3.5	20.5	10	11	M5	12	18
ACLP7	44	52	14.5	30	33	24.5	3.5	20.5	10	11	M5	16	18
ACLP8	44	52	14.5	30	33	24.5	3.5	20.5	10	11	M5	20	18
ACLP9	44	52	14.5	30	33	24.5	3.5	20.5	10	11	M5	25	18
ACLP10	44	52	14.5	30	33	24.5	3.5	20.5	10	11	M5	32	18
ACLP11	44	52	14.5	30	33	24.5	3.5	20.5	10	11	M5	40	18
ACLP12	44	52	14.5	30	33	24.5	3.5	20.5	10	11	M5	50	18
ACLP13	44	52	14.5	30	33	24.5	3.5	20.5	10	11	M6	12	18
ACLP14	44	52	14.5	30	33	24.5	3.5	20.5	10	11	M6	16	18
ACLP15	44	52	14.5	30	33	24.5	3.5	20.5	10	11	M6	20	18
ACLP16	44	52	14.5	30	33	24.5	3.5	20.5	10	11	M6	25	18
ACLP17	44	52	14.5	30	33	24.5	3.5	20.5	10	11	M6	32	18
ACLP18	44	52	14.5	30	33	24.5	3.5	20.5	10	11	M6	40	18
ACLP19	44	52	14.5	30	33	24.5	3.5	20.5	10	11	M6	50	18
ACLP20	63	73.5	18	38	41	31	3.5	27	13.5	13.5	M6	12	24
ACLP21	63	73.5	18	38	41	31	3.5	27	13.5	13.5	M6	16	24
ACLP22	63	73.5	18	38	41	31	3.5	27	13.5	13.5	M6	20	24
ACLP23	63	73.5	18	38	41	31	3.5	27	13.5	13.5	M6	25	24
ACLP24	63	73.5	18	38	41	31	3.5	27	13.5	13.5	M6	32	24
ACLP25	63	73.5	18	38	41	31	3.5	27	13.5	13.5	M6	40	24
ACLP26	63	73.5	18	38	41	31	3.5	27	13.5	13.5	M6	50	24
ACLP27	63	73.5	18	38	41	31	3.5	27	13.5	13.5	M6	63	24
ACLP28	63	73.5	18	38	41	31	3.5	27	13.5	13.5	M8	12	24
ACLP29	63	73.5	18	38	41	31	3.5	27	13.5	13.5	M8	16	24
ACLP30	63	73.5	18	38	41	31	3.5	27	13.5	13.5	M8	20	24
ACLP31	63	73.5	18	38	41	31	3.5	27	13.5	13.5	M8	25	24
ACLP32	63	73.5	18	38	41	31	3.5	27	13.5	13.5	M8	32	24
ACLP33	63	73.5	18	38	41	31	3.5	27	13.5	13.5	M8	40	24
ACLP34	63	73.5	18	38	41	31	3.5	27	13.5	13.5	M8	50	24
ACLP35	63	73.5	18	38	41	31	3.5	27	13.5	13.5	M8	63	24
ACLP36	63	73.5	18	38	41	31	3.5	27	13.5	13.5	M10	20	24
ACLP37	63	73.5	18	38	41	31	3.5	27	13.5	13.5	M10	25	24
ACLP38	63	73.5	18	38	41	31	3.5	27	13.5	13.5	M10	32	24
ACLP39	63	73.5	18	38	41	31	3.5	27	13.5	13.5	M10	40	24
ACLP40	63	73.5	18	38	41	31	3.5	27	13.5	13.5	M10	50	24
ACLP41	63	73.5	18	38	41	31	3.5	27	13.5	13.5	M10	63	24
ACLP42	63	73.5	18	38	41	31	3.5	27	13.5	13.5	M10	80	24

Adjustable Clamping Lever ERM

250

KNOBBS & HANDLES

Part Reference											Thread		Teeth No.
	R	L	D	H	H1	h1	h2	h3	d1	L1	d 6h	l	z
ACLP43	78	90.5	21.5	46	50	36	3.5	34.5	16	16	M8	16	26
ACLP44	78	90.5	21.5	46	50	36	3.5	34.5	16	16	M8	20	26
ACLP45	78	90.5	21.5	46	50	36	3.5	34.5	16	16	M8	25	26
ACLP46	78	90.5	21.5	46	50	36	3.5	34.5	16	16	M8	32	26
ACLP47	78	90.5	21.5	46	50	36	3.5	34.5	16	16	M8	40	26
ACLP48	78	90.5	21.5	46	50	36	3.5	34.5	16	16	M8	50	26
ACLP49	78	90.5	21.5	46	50	36	3.5	34.5	16	16	M8	63	26
ACLP50	78	90.5	21.5	46	50	36	3.5	34.5	16	16	M10	16	26
ACLP51	78	90.5	21.5	46	50	36	3.5	34.5	16	16	M10	20	26
ACLP52	78	90.5	21.5	46	50	36	3.5	34.5	16	16	M10	25	26
ACLP53	78	90.5	21.5	46	50	36	3.5	34.5	16	16	M10	32	26
ACLP54	78	90.5	21.5	46	50	36	3.5	34.5	16	16	M10	40	26
ACLP55	78	90.5	21.5	46	50	36	3.5	34.5	16	16	M10	50	26
ACLP56	78	90.5	21.5	46	50	36	3.5	34.5	16	16	M10	63	26
ACLP57	78	90.5	21.5	46	50	36	3.5	34.5	16	16	M10	80	26
ACLP58	78	90.5	21.5	46	50	36	3.5	34.5	16	16	M12	25	26
ACLP59	78	90.5	21.5	46	50	36	3.5	34.5	16	16	M12	32	26
ACLP60	78	90.5	21.5	46	50	36	3.5	34.5	16	16	M12	40	26
ACLP61	78	90.5	21.5	46	50	36	3.5	34.5	16	16	M12	50	26
ACLP62	78	90.5	21.5	46	50	36	3.5	34.5	16	16	M12	63	26
ACLP63	78	90.5	21.5	46	50	36	3.5	34.5	16	16	M12	80	26
ACLP64	95	109	25	56	61	43	5	42	19	18	M10	16	28
ACLP65	95	109	25	56	61	43	5	42	19	18	M10	20	28
ACLP66	95	109	25	56	61	43	5	42	19	18	M10	25	28
ACLP67	95	109	25	56	61	43	5	42	19	18	M10	32	28
ACLP68	95	109	25	56	61	43	5	42	19	18	M10	40	28
ACLP69	95	109	25	56	61	43	5	42	19	18	M10	50	28
ACLP70	95	109	25	56	61	43	5	42	19	18	M10	63	28
ACLP71	95	109	25	56	61	43	5	42	19	18	M10	80	28
ACLP72	95	109	25	56	61	43	5	42	19	18	M12	16	28
ACLP73	95	109	25	56	61	43	5	42	19	18	M12	20	28
ACLP74	95	109	25	56	61	43	5	42	19	18	M12	25	28
ACLP75	95	109	25	56	61	43	5	42	19	18	M12	32	28
ACLP76	95	109	25	56	61	43	5	42	19	18	M12	40	28
ACLP77	95	109	25	56	61	43	5	42	19	18	M12	50	28
ACLP78	95	109	25	56	61	43	5	42	19	18	M12	63	28
ACLP79	95	109	25	56	61	43	5	42	19	18	M12	80	28
ACLP80	95	109	25	56	61	43	5	42	19	18	M16	25	28
ACLP81	95	109	25	56	61	43	5	42	19	18	M16	32	28
ACLP82	95	109	25	56	61	43	5	42	19	18	M16	40	28
ACLP83	95	109	25	56	61	43	5	42	19	18	M16	50	28
ACLP84	95	109	25	56	61	43	5	42	19	18	M16	63	28
ACLP85	95	109	25	56	61	43	5	42	19	18	M16	80	28