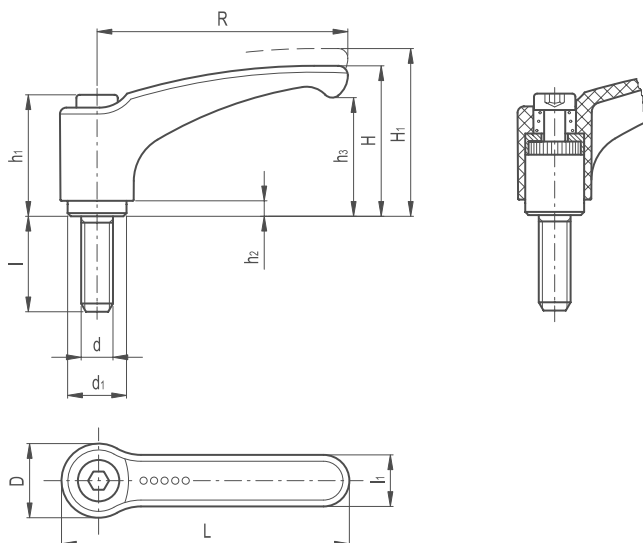


# Adjustable Clamping Lever Glass Fibre Reinforced ERZ



## LEVER BODY

- / Glass-fibre reinforced polyamide based (PA) technopolymer
- / Resistant to solvents, oils, greases and other chemical agents
- / Built-in zinc alloy toothed insert for coupling to the metal clamping element

## COLOUR

- / Grey-black, matte finish

## CLAMPING ELEMENT

Black-oxide steel with toothed element for coupling to the built-in zinc alloy insert, black-oxide steel retaining screw and return spring.

## SPECIAL EXECUTIONS ON REQUEST

- (For sufficient quantities)
- / Lever body in orange colour

## FEATURES AND APPLICATIONS

Particularly suitable when the lever turning angle is limited owing to lack of space. The metal toothing of the built-in zinc alloy insert allows the assembly of clamping elements completely made out of metal, which can be easily modified by machining in case of special assembly requirements.

## INSTRUCTIONS OF USE

For clamping, lift the lever to disengage the clamping device toothing and bring it back to start position. By releasing the lever, the return spring automatically engages the toothing. If the lever cannot make a 360° rotation, the clamping element can be easily screwed by means of the hexagon socket front head screw (after having disengaged the lever).

## ERGONOMY AND DESIGN

The slightly arched shape of the lever and the ergonomic terminal enlargement give the operator a comfortable and safe grip and make the design of the handle more elegant.

