

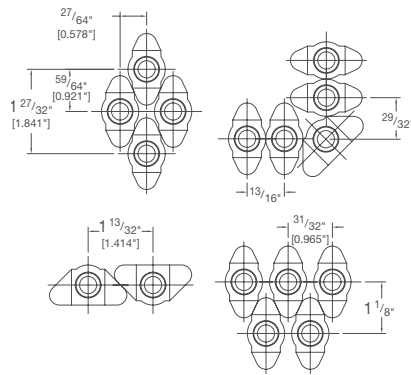
# Anchor Bushes

## AB2

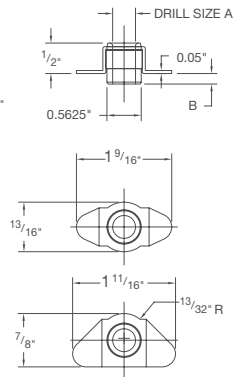
A Bore	C O.D.	B Length
9/32" to 29/64"	.5625"	.125"
7.2mm to 11.5mm	+.000"	.187"
	-.004"	.250"
		.375"



### MINIMUM PATTERNS



### Standard Type Ref. AB2

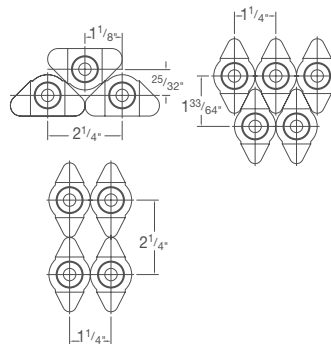


## AB3

A Bore	C O.D.	B Length
29/64" to 5/8"	.750"	.050"
11.6mm to 15.75mm	+.000"	.125"
	-.004"	.187"
		.250"
		.375"



### MINIMUM PATTERNS



### Standard Type Ref. AB3

